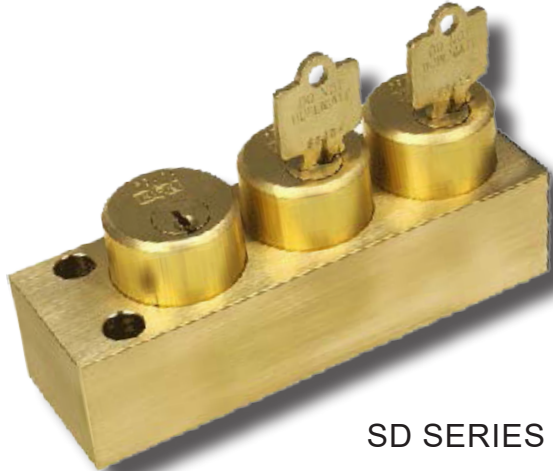




SPECIFICATION DATA SHEET

TYPE T - KEY TRANSFER BLOCK

WWW.KIRKKEY.COM



SD SERIES



HD SERIES

The Type T transfer block is an assembly of two or more lock cylinders in a single housing. Type T transfer blocks are designed to retain one or more keys (called trapped keys) while the remaining (initiating) key(s) are removed. This allows an exchange of keys for two or more interlock sequences. Once a retained key is removed, the initiating keys are trapped in the interlock. Type T interlocks are called transfer blocks because there is no locking bolt projecting through the base for locking any moving part. Usually the need for a Type T transfer block can be eliminated by using multi-cylinder interlocks mounted on other devices, making it unnecessary to go through an additional transfer lock operation. The Type T transfer block is available in both SD and HD series and can transfer keys of each series in one unit.

OPTIONS

Key Removable - the key(s) is removable when the locking bolt is either in the extended (E) or withdrawn (W) position. Please choose E or W when ordering an interlock. Key removable extended is the most common because the locking bolt is typically extended to block/engage something.

Multi-Cylinder - up to 15 cylinders available. Housings with 5 cylinders or more come with mounting holes at each end of the housing. Designate "E" or "W" key removable position for each cylinder.

NOTE: On HD Series Type F interlocks, "W" cylinders will be located nearest the locking bolt.

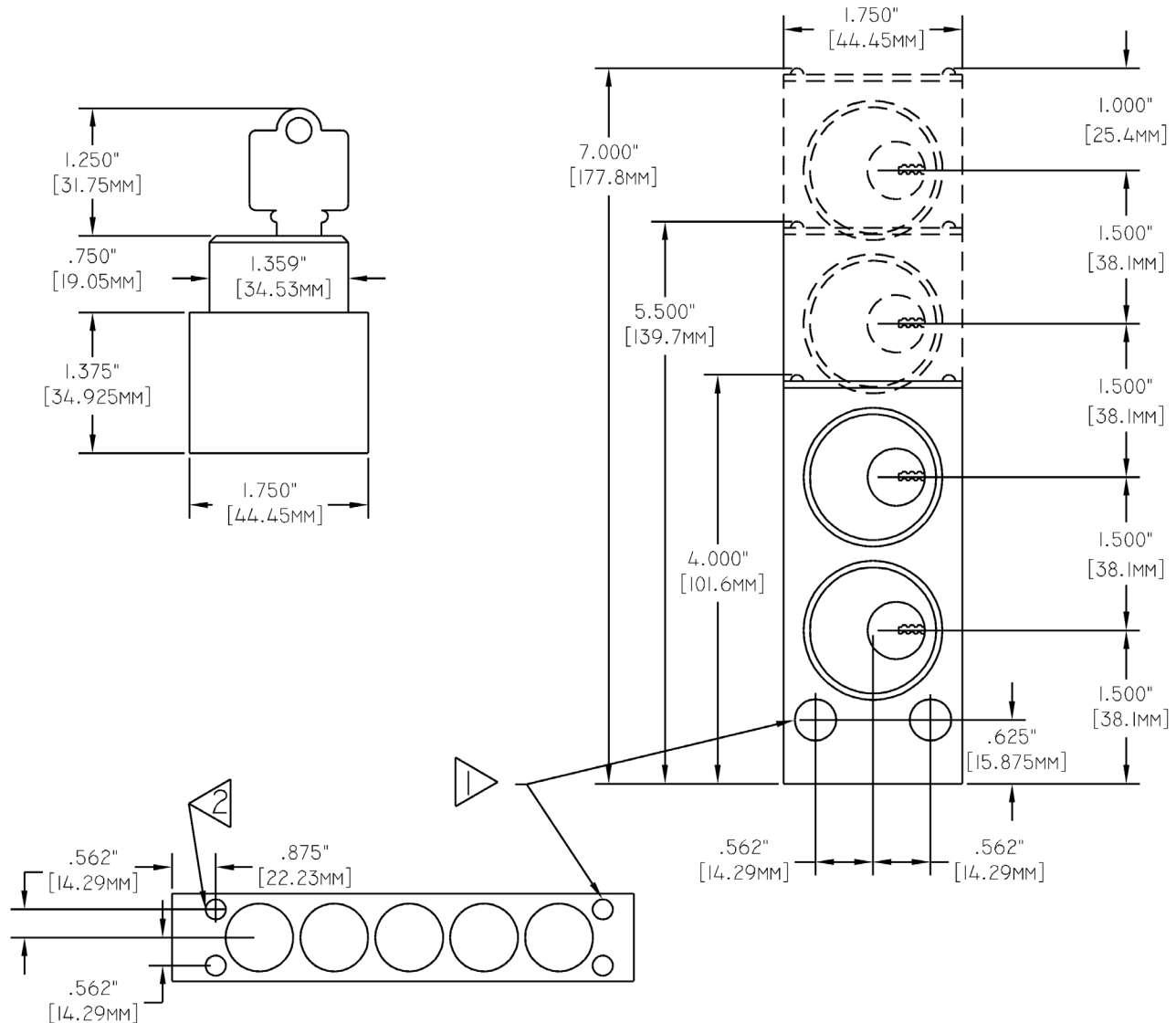
Stamp Key Interchange - specify an alphanumeric code to be stamped on the cylinder face and the key (e.g. A1, A2, B1, etc. - up to 5 characters). See Data Sheet for Keys (3.4) and Terminology (4.1) for details.

Auxiliary Switches - see Data Sheets Type Thermoplastic (2.3), Type S (2.4) and Type K (2.5) for details.

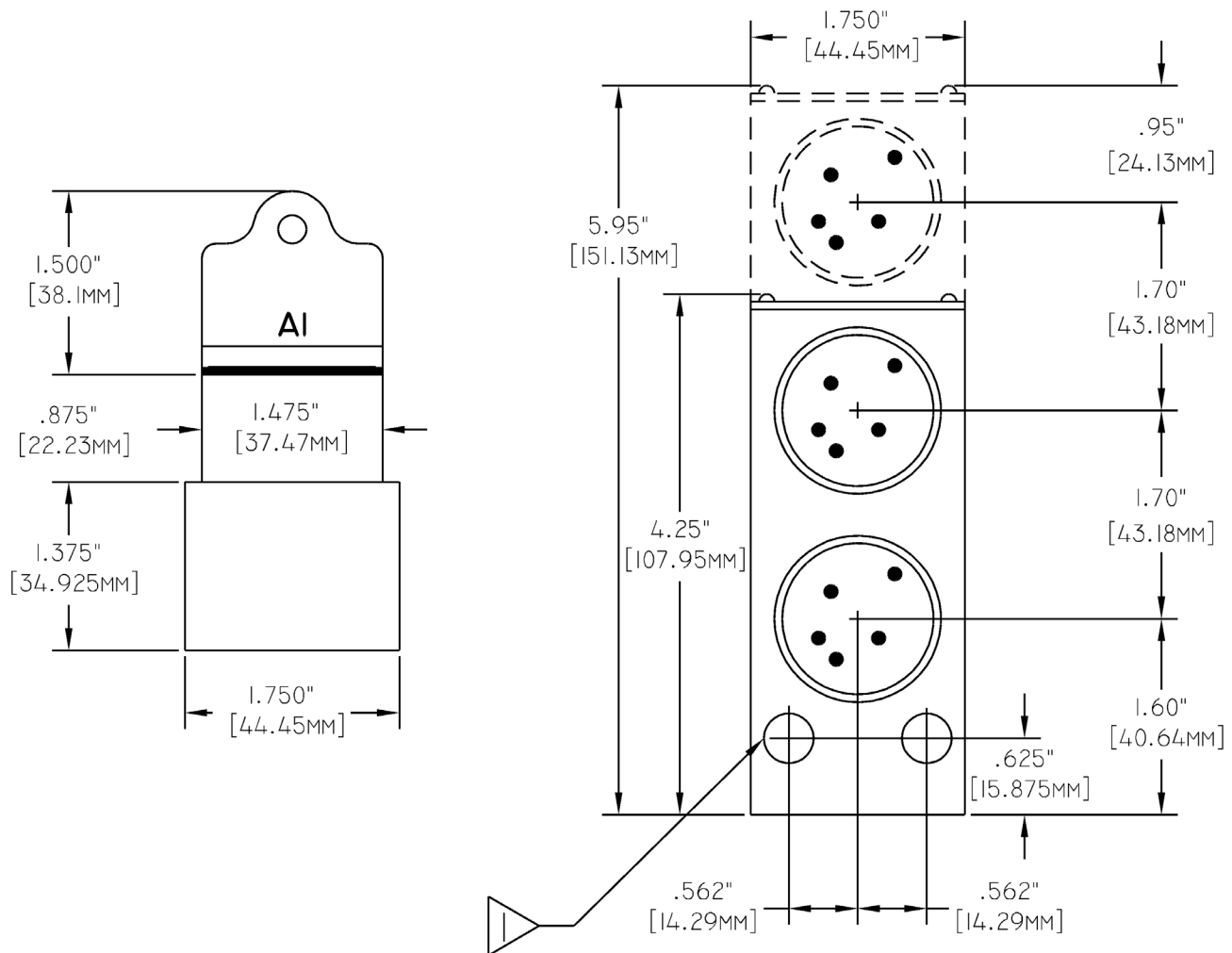
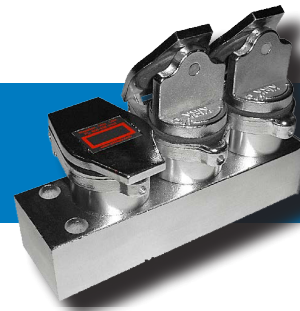
Protective Covers - see Data Sheet Protective Covers (3.1) for details.

Mounting Bolts - see Data Sheet Mounting Bolts (3.2) for details.

NOTE: When the number of keys in the transfer step exceeds 8, it may be to your advantage to use a Transfer Panel instead of a Type T interlock. See the Data Sheet (1.6) for Transfer Panels details.



HD SERIES TYPE T DRAWING



NOTES:

1) 0.4062" (10.32mm) holes for mounting bolts (2 holes).

TYPE T ORDERING GUIDE

Part Number	1	2	3	4	5	6	7	8	9	10	11	12	13	14	15
		T	R		-	-	-							-	

1	Series	K = SD Series S = HD Series													
4	Auxiliary Switch Refer to pages 25-27 for more information	0 = none 1 = K DP/DT 3 = S 4 = SS 5 = SSS 6 = SSSS A = 2 N/O 1 N/C B = 4N/O 2N/C													
8,9	Cylinder(s) Type T is available for up to 15 cylinders	SD Series							HD Series						
		1	0	= E 1 CYL	NOTE	Use numbering logic for up to 9 cylinders	1	0	= E 1 CYL	NOTE	Use numbering logic for up to 9 cylinders				
		1	1	= W 1 CYL		1	1	= W 1 CYL							
		2	0	= EE 2 CYL		2	0	= EE 2 CYL							
		2	1	= EW 2 CYL		2	1	= WE 2 CYL							
		3	0	= EEE 3 CYL		3	0	= EEE 3 CYL							
		3	1	= EEW 3 CYL		3	1	= WEE 3 CYL							
		3	2	= EWW 3 CYL		3	2	= WWE 3 CYL							
		A	0	10 CYL	NOTE	Use ABC logic for 10 - 15 cylinders	A	0	10 CYL	NOTE	Use ABC logic for 10 - 15 cylinders				
		B	0	11 CYL		B	0	11 CYL							
		C	0	12 CYL		C	0	12 CYL							
10	Stamp Key Interchange	- = No S = Yes													
11	Opposite Hand	- = No H = Opposite Hand (Only available in SD Series)													
12	Protective Covers	- = No C = Push On F = Flip Open (Push On cover only available for SD series)													
13	Mounting Bolts	- = No M = Hex T = Tamperproof													
15	Reverse	R = Reverse switch house relationship													