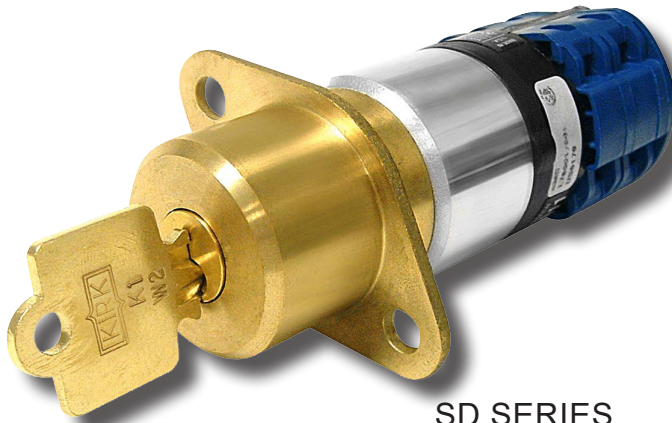




SPECIFICATION DATA SHEET

TYPE PPS - PANEL MOUNTED SWITCH

WWW.KIRKKEY.COM



SD SERIES



HD SERIES

The Type PPS Power Panel Switch is a key actuated, rotary, two-position switch designed for isolation or switching of control circuitry. The Type PPS can be panel mounted or surface mounted with optional enclosure. It is available in switch ratings of 20, 25, 40 or 63A. The switch is UL Listed and CSA approved. The Type PPS has a temperature rating of -13 degrees F to 100 degrees F. The PPS is designed so that the key will rotate 90 degrees clockwise to the trapped position. Rotation of the key to either the trapped or to the released position will cause the switch contacts to change state. The standard PPS can be panel mounted with 1/4" diameter (7mm) mounting bolts. The Type PPS is available in both SD and HD Series. The SD Series PPS key is nickel-silver and lock body is made from brass. The HD Series PPS key and lock body are made from electropolished 316 stainless steel. The quantity and location of the mounting holes are shown on the drawings that follow. An optional IP65 Polycarbonate enclosure allows surface mounting of the PPS using four bolts suitable for your specific application. Enclosure photo and drawing are shown on pg 3.. Standard switch contact arrangements are shown in the chart on pg 3. Switch ratings and specifications are outlined on HD Series Data Sheet 2.8a.

OPTIONS

Switch Rating and Contact Arrangements – see charts and ordering guide.

Mounting Options – Panel Mounting (standard) or Enclosed in an IP65 Polycarbonate enclosure. The enclosed version is supplied with an (M20) .20-.35" cable gland and lock nut.

Stamp Key Interchange - specify an alphanumeric code to be stamped on the cylinder face and the key (e.g. A1, A2, B1, etc. - up to 5 characters). See Data Sheet Keys (3.4) and Terminology (4.1) for details.

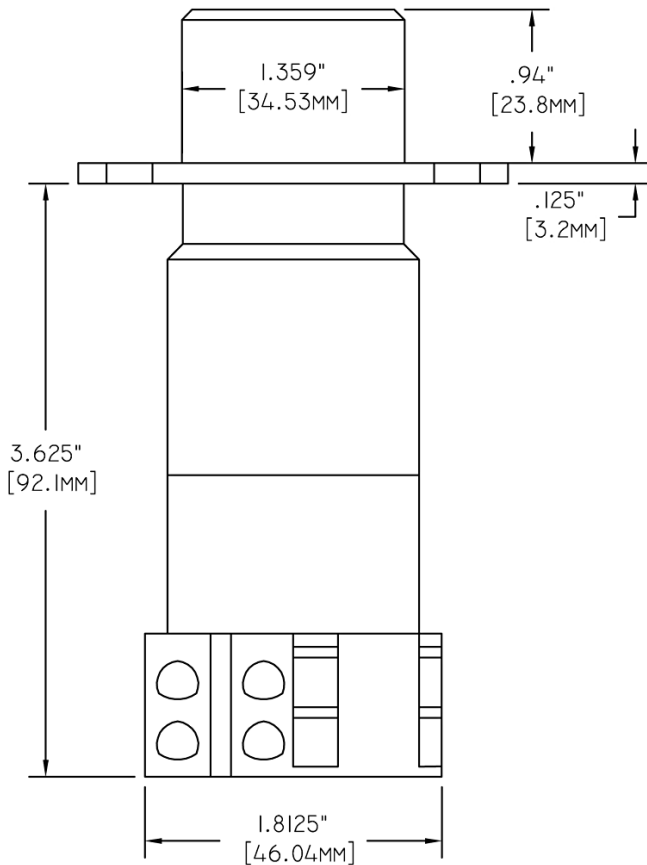
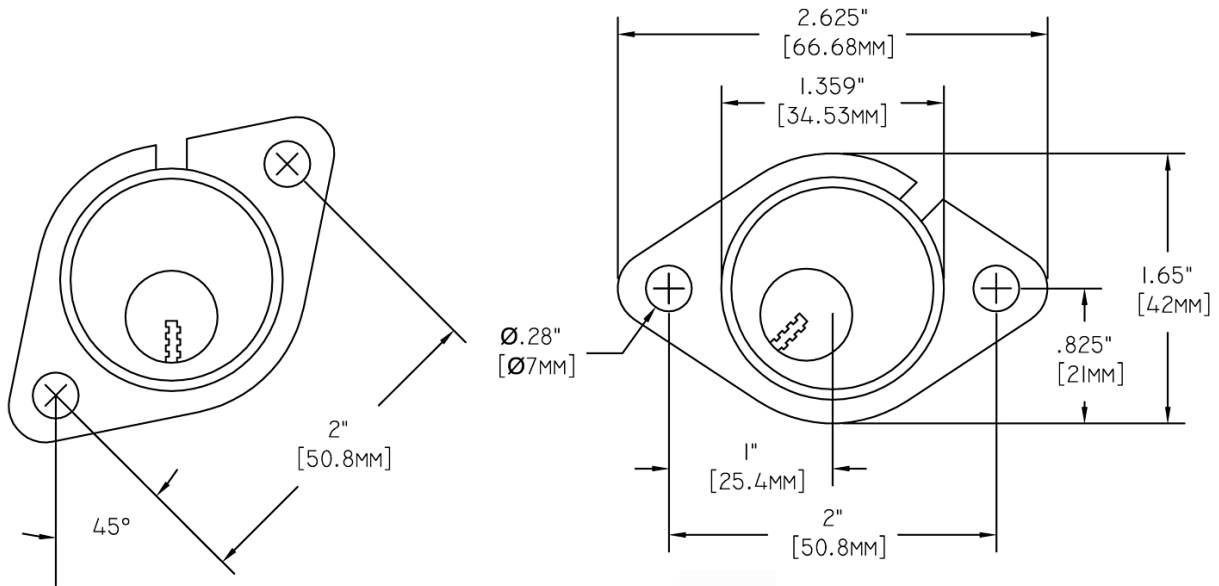
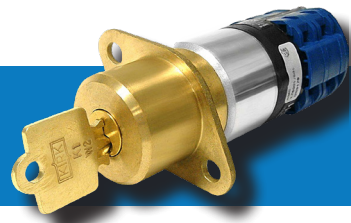
Protective Covers - see Data Sheet Protective Covers (3.1) for details.

Mounting Bolts - see Data Sheet Mounting Bolts (3.2) for details.

Opposite Hand - see Data Sheet Terminology (4.1) for details.

NOTE: Three position switch is available

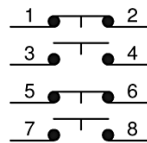
SD SERIES TYPE PPS DRAWING



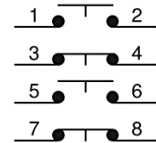
20 Amp rated switch only

2 NO / 2 NC

Key Released



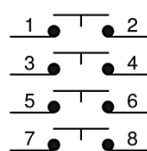
Key Trapped



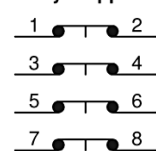
Available in all switch sizes.

4 NO

Key Released



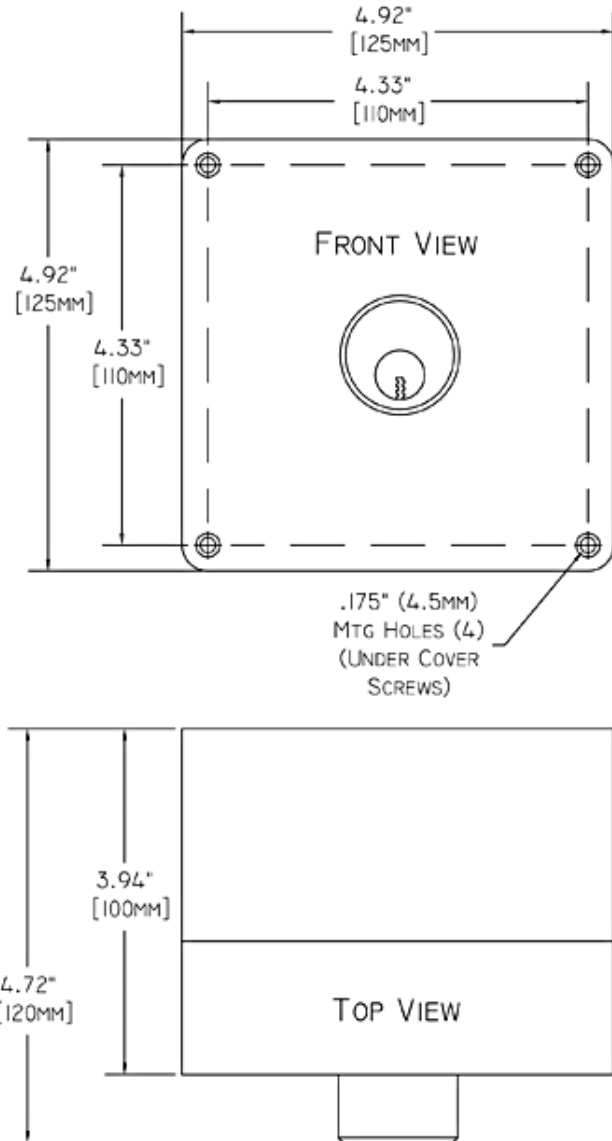
Key Trapped



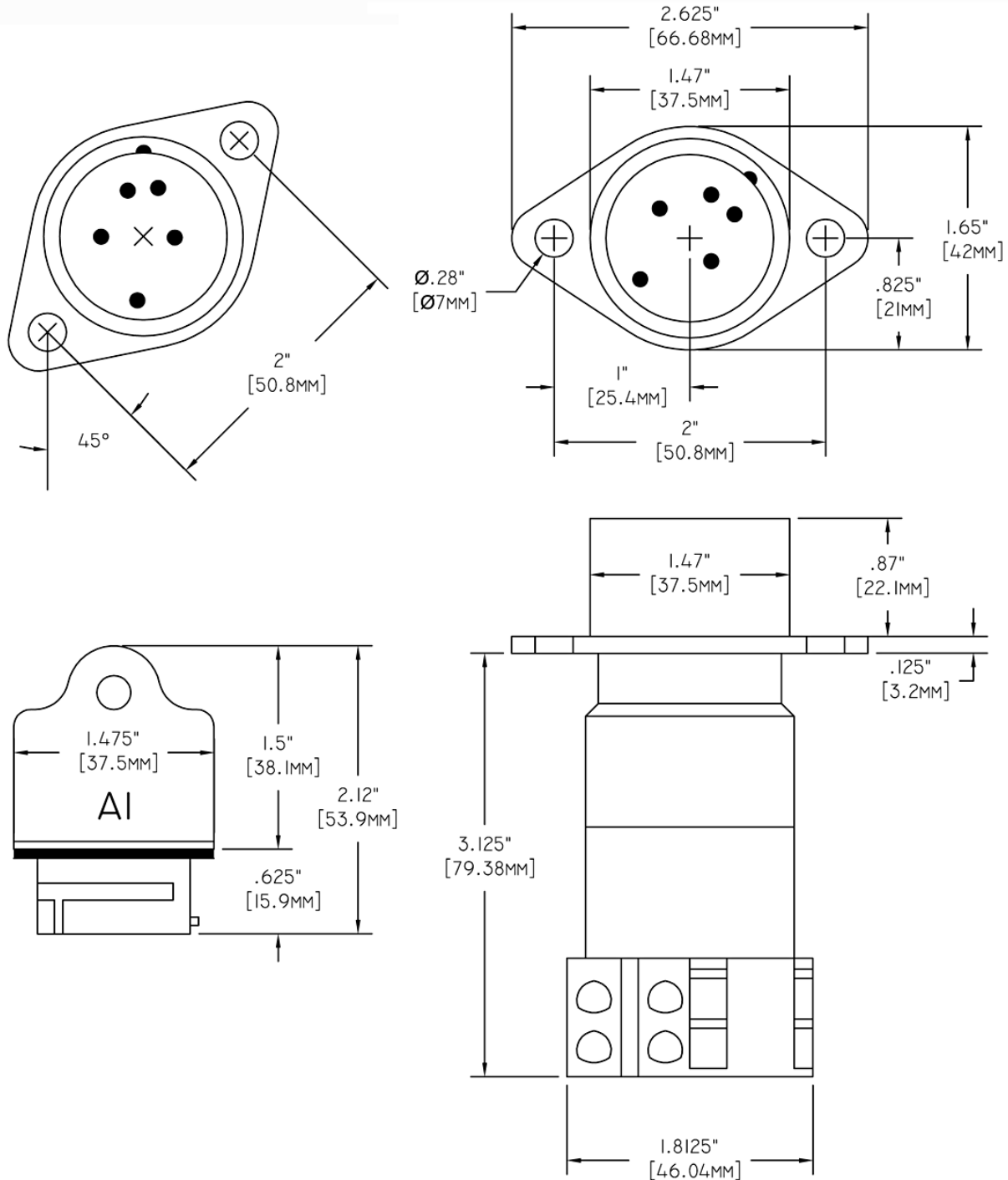
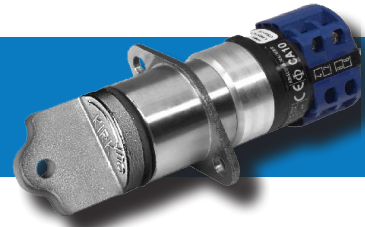
SD SERIES TYPE PPS DRAWING



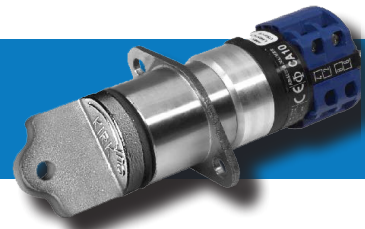
ENCLOSED PPS SHOWN



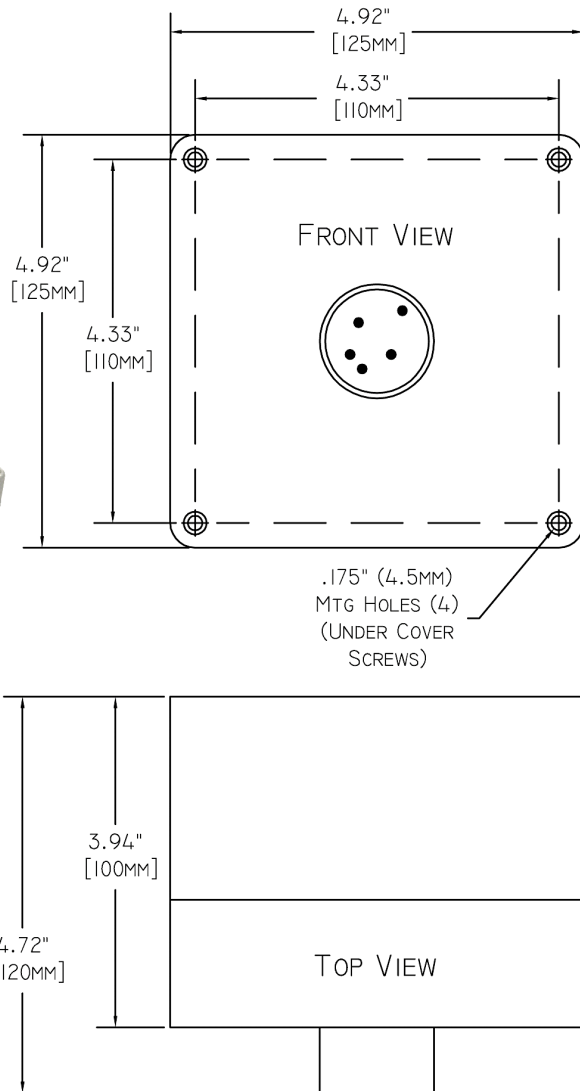
HD SERIES TYPE PPS DRAWING



HD SERIES TYPE PPS DRAWING



ENCLOSED PPS SHOWN



TYPE PPS ORDERING GUIDE

	1	2	3	4	5	6	7	8	9	10	11	12	13
Part Number		P	P	S				1	0				

1	Series	K = SD Series S = HD Series				
5,6,7	Switch Rating and Contact Arrangement	20 Amp	2	2	A	2 NO/ 2 NC - 20A Rating
			4	0	A	4 NO - 20A Rating
		25 Amp	2	2	B	2 NO / 2 NC - 25A Rating
			4	0	B	4 NO - 25A Rating
		40 Amp	2	2	C	2 NO / 2 NC - 40A Rating
			4	0	C	4 NO - 40A Rating
		63 Amp	4	0	D	4 NO - 63A Rating
10	Stamp Key Interchange	- = No S = Yes (Only available for HD Series if Flip Cover is added)				
11	Protective Covers	- = No C = Push On F = Flip Open (Push On cover only available for SD series)				
12	Mounting Bolts	- = No M = Hex T = Tamperproof				
13	Style	- = Panel Mounted E = Enclosed				