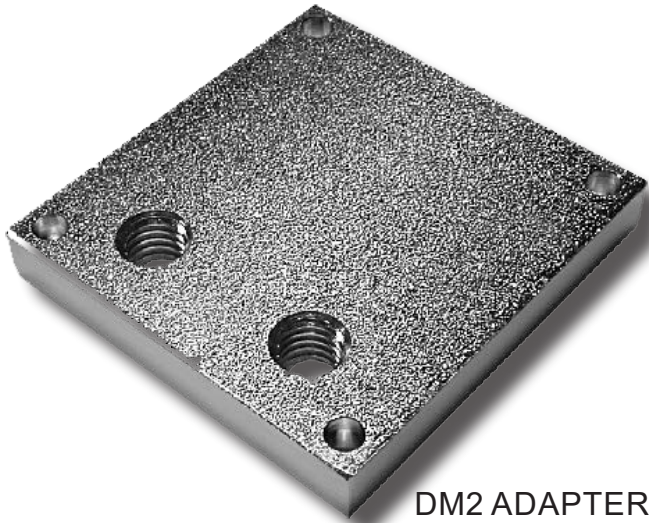




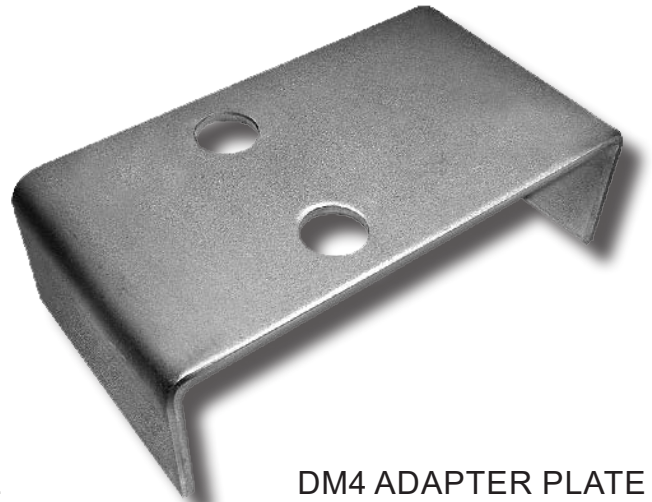
SPECIFICATION DATA SHEET

TYPE DM - MOUNTING OPTIONS

WWW.KIRKKEY.COM



DM2 ADAPTER PLATE

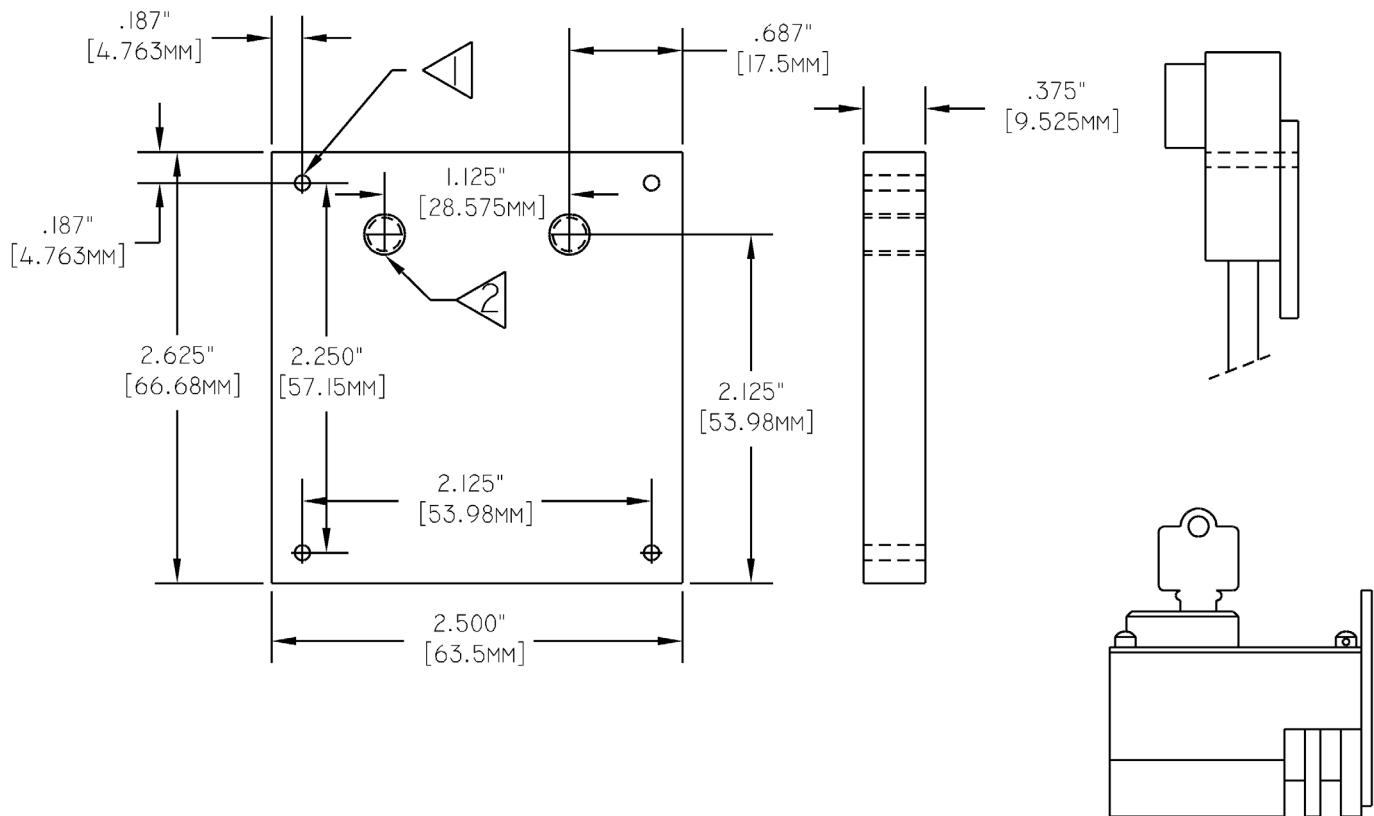
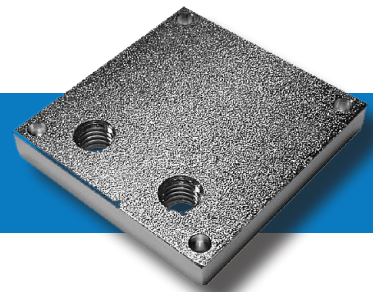


DM4 ADAPTER PLATE

The DM2 adapter plate is designed to allow easy replacement of Type DY2 interlocks with Type DM interlocks. Because of the large number of Type DY2 interlocks installed in the field, we recognized a need for a mounting plate that will accommodate the Type DM interlock. The Type DM interlock will bolt to the DM2 adapter plate with 3/8-16 x 1-3/4" bolts. The DM2 adapter plate is made from zinc plated steel and can be bolted or welded to your door or door jamb.

The DM4 mounting plate can be welded to a door or a door frame. The Type DM interlock will bolt to the DM4 mounting plate with 3/8-16 x 2-1/4" bolts. The DM4 mounting plate is available in 1018 steel or 304 stainless steel.

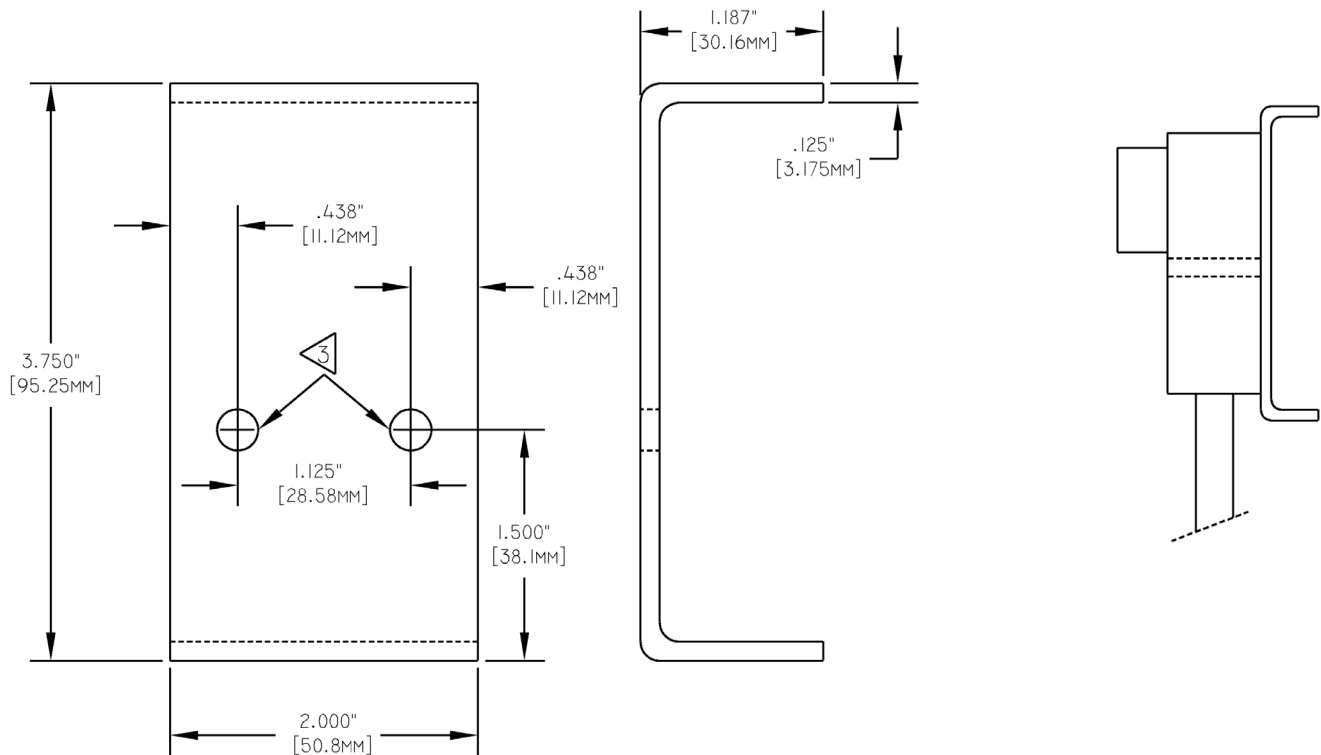
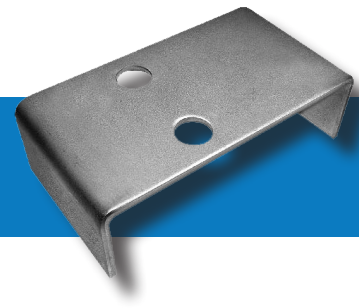
DM2 ADAPTER PLATE DRAWING



NOTES:

- 1) .2031" (5.159mm) diameter holes (4).
- 2) 3/8"-16 tapped holes (2).

DM4 ADAPTER PLATE DRAWING



NOTES:

3) 0.4062" (10.32mm) holes for mounting bolts.

TYPE DM ADAPTER PLATES ORDERING GUIDE



DM2 ADAPTER PLATE - To order this plate with your Type DM interlock, put the letter “P” in column fourteen of the interlock part number. Reference part number when ordering separately.

	1	2	3	4	5	6	7	8	9
Part Number	1	2	2	1	6	1	0	0	1



DM4 ADAPTER PLATE - To order this plate with your Type DM interlock, reference the part number.

	1	2	3	4	5	6	7	8	9
Part Number - 304 Stainless Steel	S	4	2	9	6	3	0	0	1

	1	2	3	4	5	6	7	8	9
Part Number - 1018 Steel	S	4	2	9	6	3	0	0	2