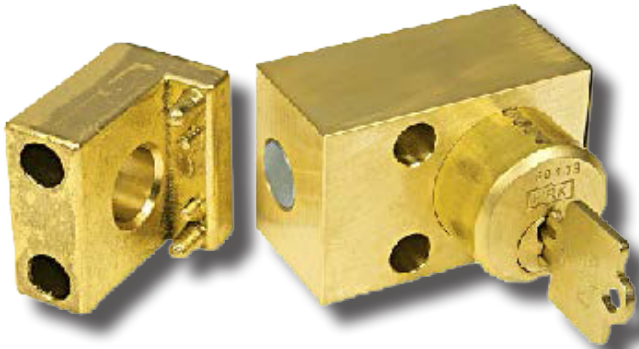




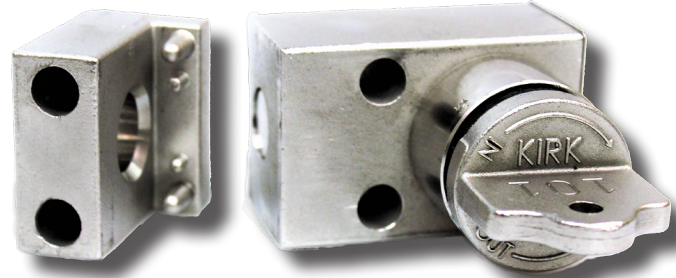
SPECIFICATION DATA SHEET

TYPE D - DOOR MOUNTED (DETACHABLE)

WWW.KIRKKEY.COM



SD SERIES



HD SERIES

A Type D interlock has two parts: a main body with one or more cylinders and a latch block. The main body is typically attached to a door or hatch that swings open. The latch block is typically bolted to the door frame. When the key is turned and the door is opened, the main body and latch block are separated causing the key to be trapped and the locking bolt to be held in the withdrawn position. The key is always held in the Type D interlock whenever the two parts are separated. When the door is properly closed, the lock body seats fully against the latch block, releasing the locking bolt. The operating key can now be rotated to extend the locking bolt into the latch block. After the locking bolt is fully extended, the operating key may be removed. The SD series Type D interlock is made from brass. The lock bolt is made from 5/8 inch diameter 316 stainless steel. The HD Series Type D housing and latch block are made from electropolished 316 stainless steel.

OPTIONS

Key Removable - the key(s) is removable when the locking bolt is either in the extended (E) or withdrawn (W) position. Please choose E or W when ordering an interlock. Key removable extended is the most common because the locking bolt is typically extended to block/engage something.

Multi-Cylinder - up to 7 cylinders available. A multi-cylinder Type D requiring all keys to unlock the door should have each cylinder designated "E". Any cylinders that are designated "W" will release a key when the door is unlocked - such as a personnel key. Note that HD series Type D interlocks with "W" keys will be built with the "W" keys located nearest the locking bolt. ("W" keys are trapped when the door is locked - "E" keys are trapped when the door is unlocked.)

Stamp Key Interchange - specify an alphanumeric code to be stamped on the cylinder face and the key (e.g. A1, A2, B1, etc. - up to 5 characters). See Data Sheet for Keys (3.4) and Terminology (4.1) for details.

Auxiliary Switches - see Data Sheets for Type Thermoplastic (2.3), Type S (2.4) and Type K (2.5) for details.

Protective Covers - see Data Sheet for Protective Covers (3.1) for details.

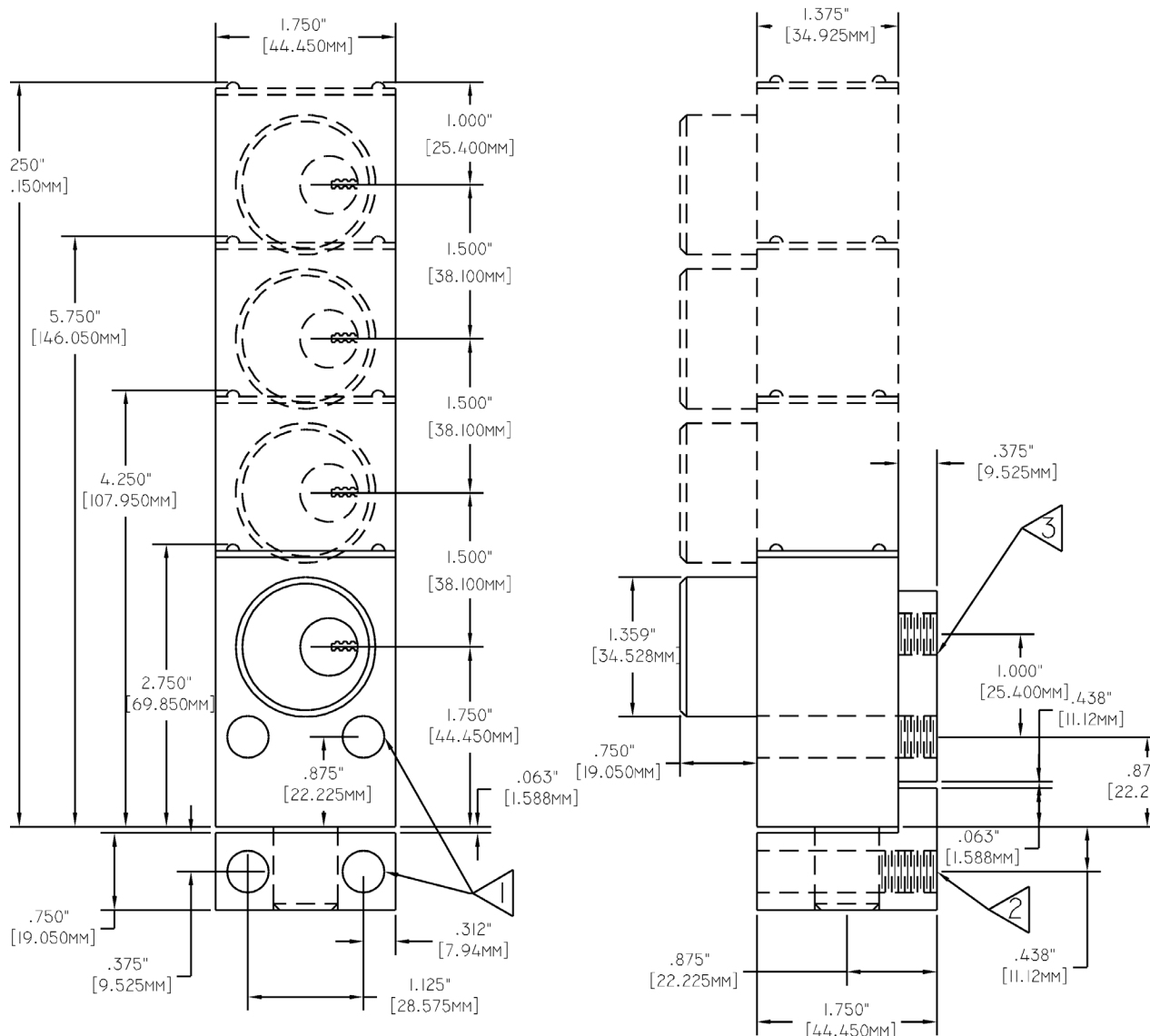
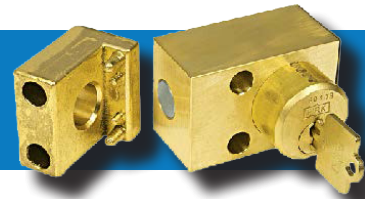
Mounting Bolts - see Data Sheet for Mounting Bolts (3.2) for details.

Opposite Hand - see Data Sheet for Terminology (4.1) for details. (Only available for SD Series)

Adapter Plates - an adapter plate can be fastened to the housing to allow front mounting. See Data Sheet (3.3) for Adapter Plate details.

Caution: The Type D interlock should not be used to align the door, or to be the latching means for holding the door in the closed position.

SD SERIES TYPE D DRAWING

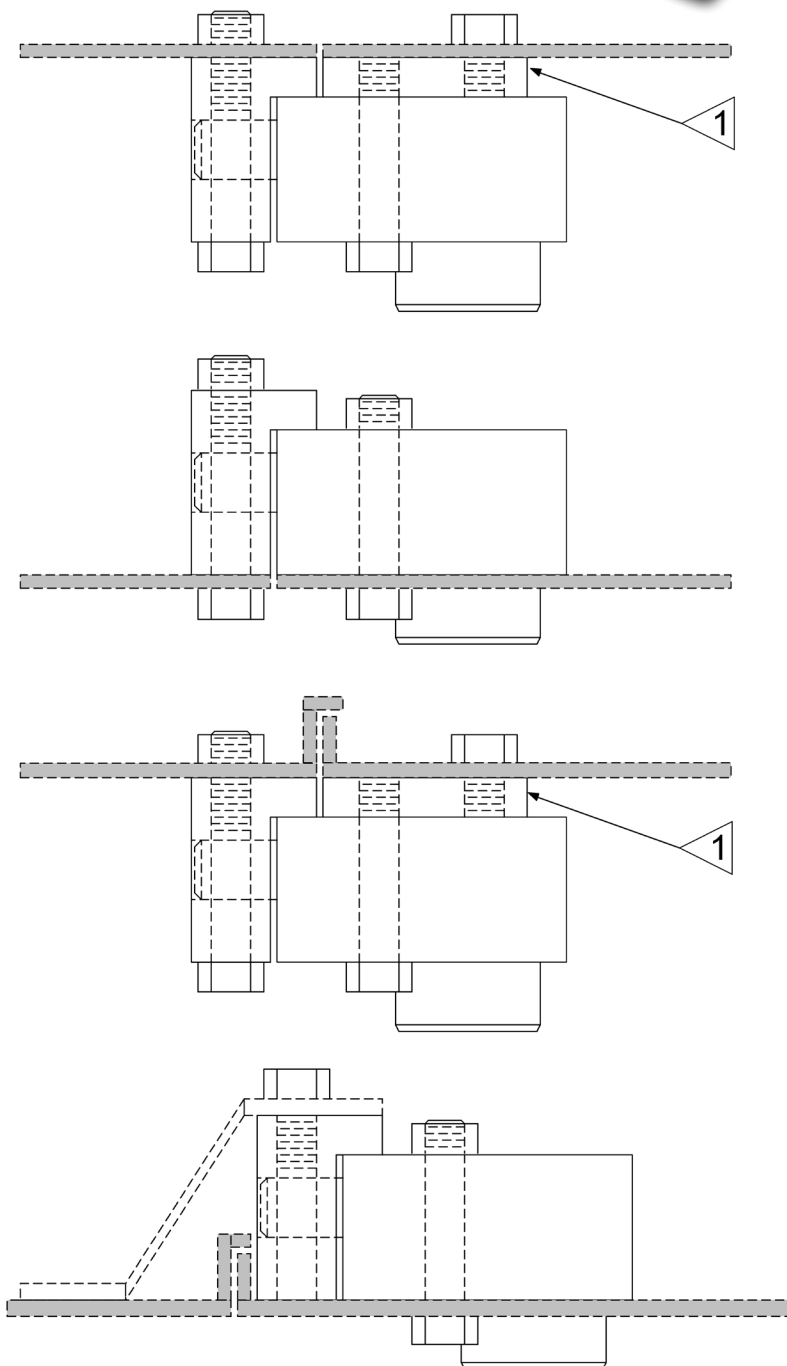
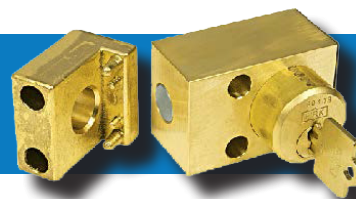


NOTES:

- 1) 0.4062" (10.32mm) holes for mounting bolts (4 holes).
- 2) 1/2"-13 thread tapped 1/2" from bottom (latch block only).
- 3) Optional adapter plate shown - see Data Sheet (3.3) for Adapter Plate details.

Caution: The Type D interlock should not be used to align the door, or to be the latching means for holding the door in the closed position.

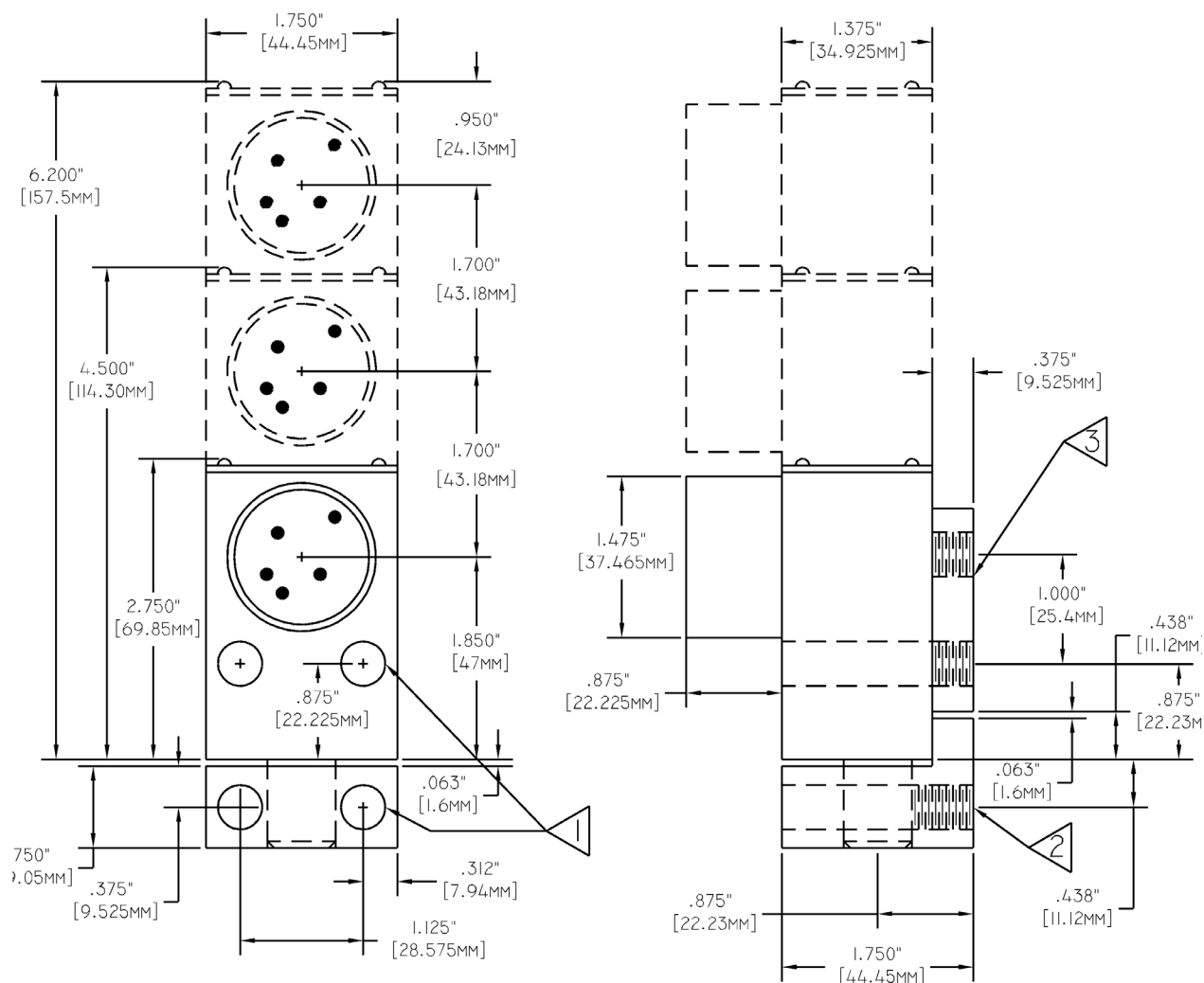
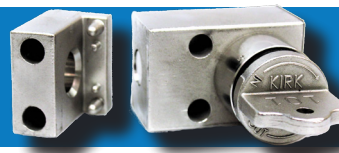
SD SERIES TYPE D DRAWING



NOTES:

1) Shown with optional adapter plate. The Type D interlock can be mounted on either flat or reinforced doors (front and back mounted). See Data Sheet (3.3) for Adapter Plate details.

HD SERIES TYPE D DRAWING

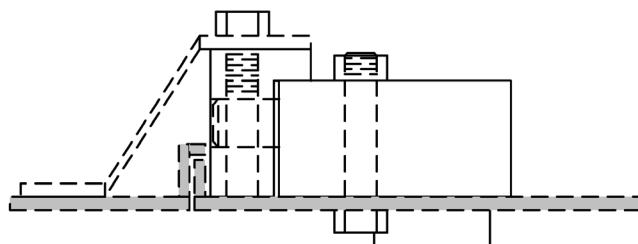
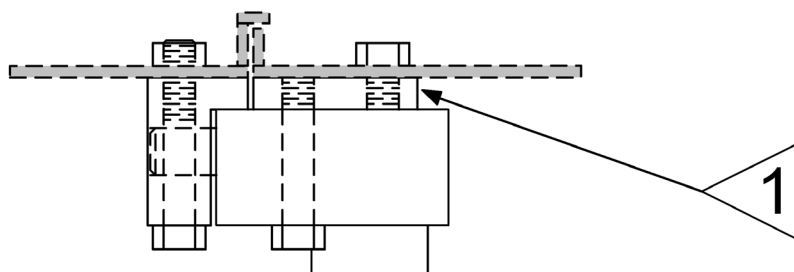
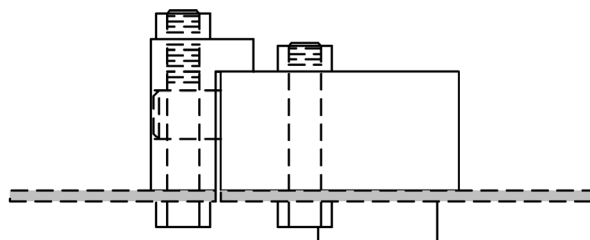
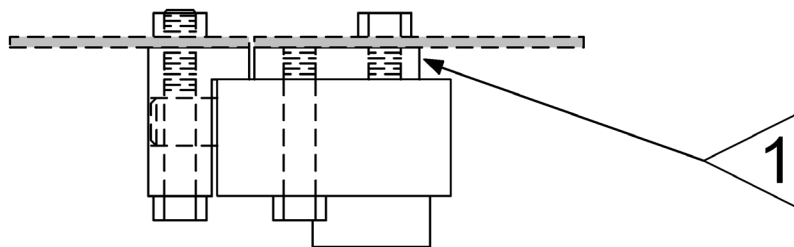
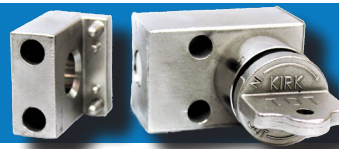


NOTES:

- 1) 0.4062" (10.32mm) holes for mounting bolts.
- 2) 1/2-13 thread tapped 1/2" from bottom.
- 3) Optional adapter plate shown (see Data Sheet 3.3 for details).

Caution: The Type D interlock should not be used to align the door, or to be the latching means for holding the door in the closed position.

HD SERIES TYPE D DRAWING



NOTES:

1) Shown with optional adapter plate. The Type D interlock can be mounted on either flat or reinforced doors (front and back mounted). See Data Sheet (3.3) for Adapter Plate details.

TYPE D ORDERING GUIDE

	1	2	3	4	5	6	7	8	9	10	11	12	13	14	15
Part Number		D	L		-	-	-								

1	Series	K = SD Series S = HD Series													
4	Auxiliary Switch Refer to pages 25-27 for more information	0 = none 1 = K DP/DT 3 = S 4 = SS 5 = SSS 6 = SSSS A = 2 N/O 1 N/C B=4N/O 2N/C													
8,9	Cylinder(s) Type D is available for up to 7 cylinders	SD Series							HD Series						
		1	0	= E 1 CYL	NOTE Use numbering logic for up to 7 cylinders	1	0	= E 1 CYL	NOTE Use numbering logic for up to 7 cylinders	1	0	= E 1 CYL			
		1	1	= W 1 CYL		1	1	= W 1 CYL		1	1	= W 1 CYL			
		2	0	= EE 2 CYL		2	0	= EE 2 CYL		2	0	= EE 2 CYL			
		2	1	= EW 2 CYL		2	1	= WE 2 CYL		2	1	= WE 2 CYL			
		3	0	= EEE 3 CYL		3	0	= EEE 3 CYL		3	0	= EEE 3 CYL			
		3	1	= EEW 3 CYL		3	1	= WEE 3 CYL		3	1	= WEE 3 CYL			
		3	2	= EWW 3 CYL		3	2	= WWE 3 CYL		3	2	= WWE 3 CYL			
10	Stamp Key Interchange	- = No S = Yes													
11	Opposite Hand	- = No H = Opposite Hand (Only available in SD Series)													
12	Protective Covers	- = No C = Push On F = Flip Open (Push On cover only available for SD series)													
13	Mounting Bolts	- = No M = Hex T = Tamperproof													
14	Adapter Plate	- = No P = Adapter Plate													
15	Reverse	R = Reverse switch housing relationship (Not available with auxiliary switch options A or B)													