



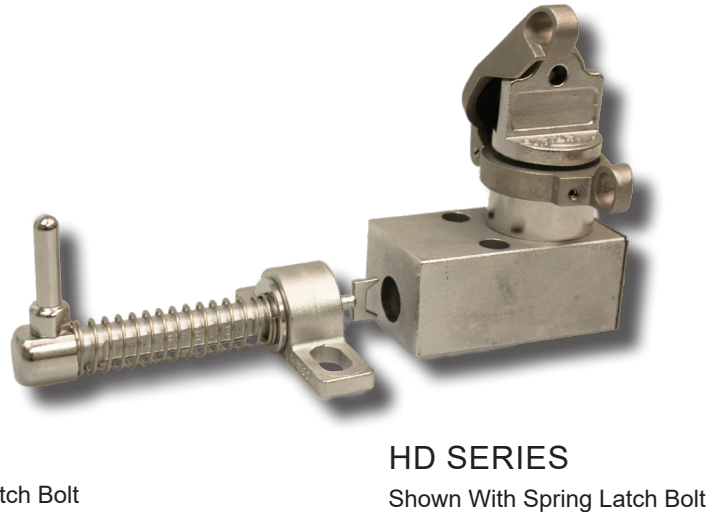
WWW.KIRKKEY.COM

# SPECIFICATION DATA SHEET

## TYPE DM - ACCESS DOOR INTERLOCK



**SD SERIES**  
Shown With Chain Latch Bolt



**HD SERIES**  
Shown With Spring Latch Bolt

The Type DM access door interlock is designed for hinged doors, manhole covers, sliding doors or any sort of hatch or lid. It is well suited for loose fitting doors or hatches that will not accommodate a precise fitting door lock. The Type DM consists of a main body and a latch bolt with twelve links of 316 stainless steel chain. The lock body can be mounted to the equipment and the chain can be bolted or welded to the door or hatch with the proper amount of "slack" for the latch bolt to reach the DM lock body. Under normal conditions the key is upstream in the interlock scheme and the chain/bolt is trapped in the lock securing the door in the closed position. The latch bolt cannot be released until the key is inserted and turned. Only then can the latch bolt be rotated 1/4 turn and released from the lock – thereby trapping the key. The door or hatch must be closed and the latch bolt must be returned to the lock body in order to free the key. The interlock housing is made from brass and the latch bolt is made from 316 stainless steel. All components of the HD Series Type DM interlock are made from electropolished 316 stainless steel. Both the SD and HD Series have a gasket to protect against the introduction of dust and dirt into the lock body.

## OPTIONS

**Key Removable** - the key(s) is removable when the locking bolt is either in the extended (E) or withdrawn (W) position. Please choose E or W when ordering an interlock. Key removable extended is the most common because the locking bolt is typically extended to block/engage something.

**Multi-Cylinder** - up to 15 cylinders available. Housings with 5 cylinders or more come with mounting holes at each end of the housing. Designate "E" or "W" key removable position for each cylinder.

NOTE: On HD Series Type F interlocks, "W" cylinders will be located nearest the locking bolt.

**Stamp Key Interchange** - specify an alphanumeric code to be stamped on the cylinder face and the key (e.g. A1, A2, B1, etc. - up to 5 characters). See Data Sheet for Keys (3.4) and Terminology (4.1) for details.

**Bolt Type** - Spring bolt or chain bolt

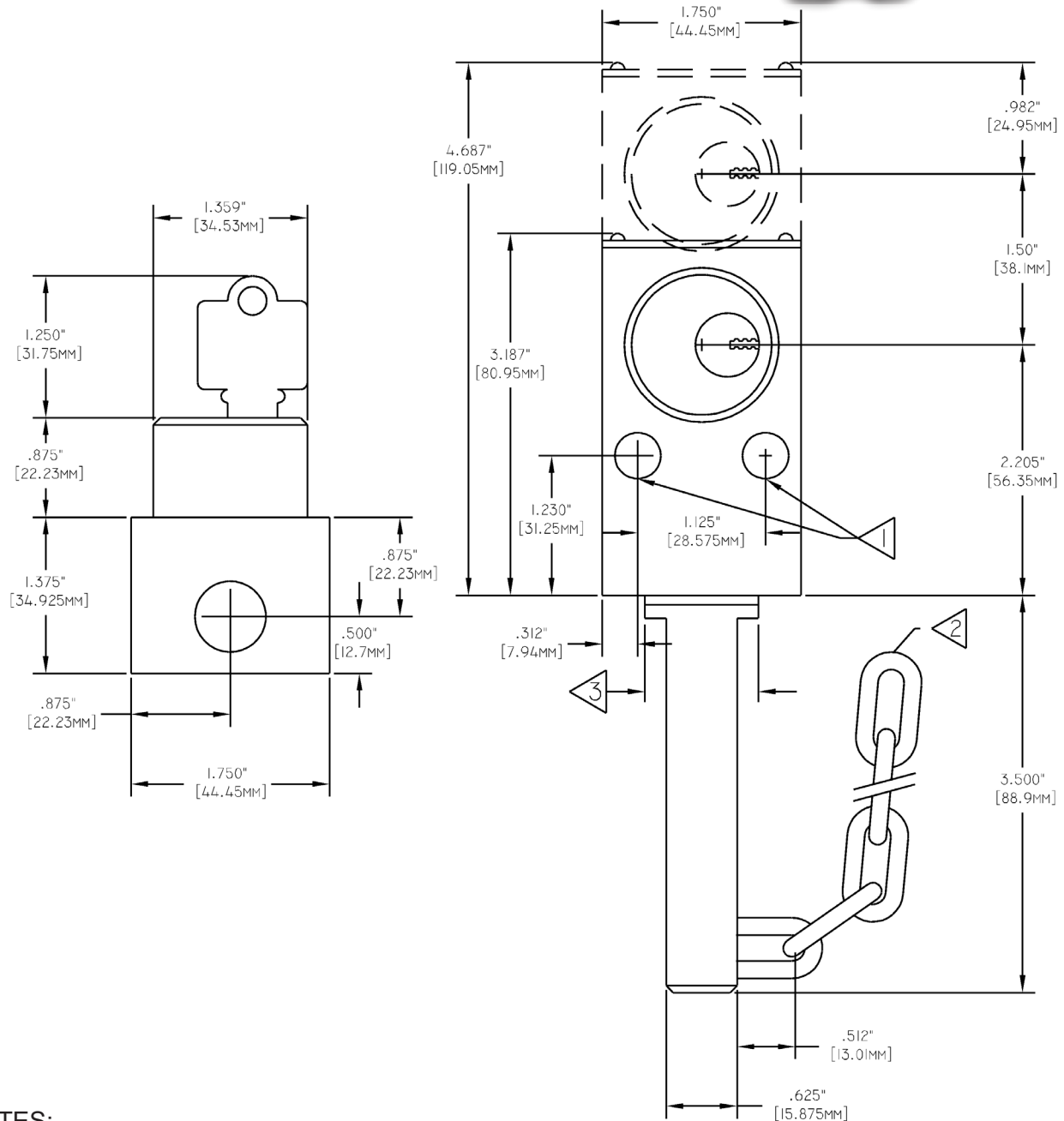
**Auxiliary Switches** - see Data Sheets for Type Thermoplastic (2.3), Type S (2.4) and Type K (2.5) for details.

**Protective Covers** - see Data Sheet for Protective Covers (3.1) for details.

**Mounting Bolts** - see Data Sheet for Mounting Bolts (3.2) for details.

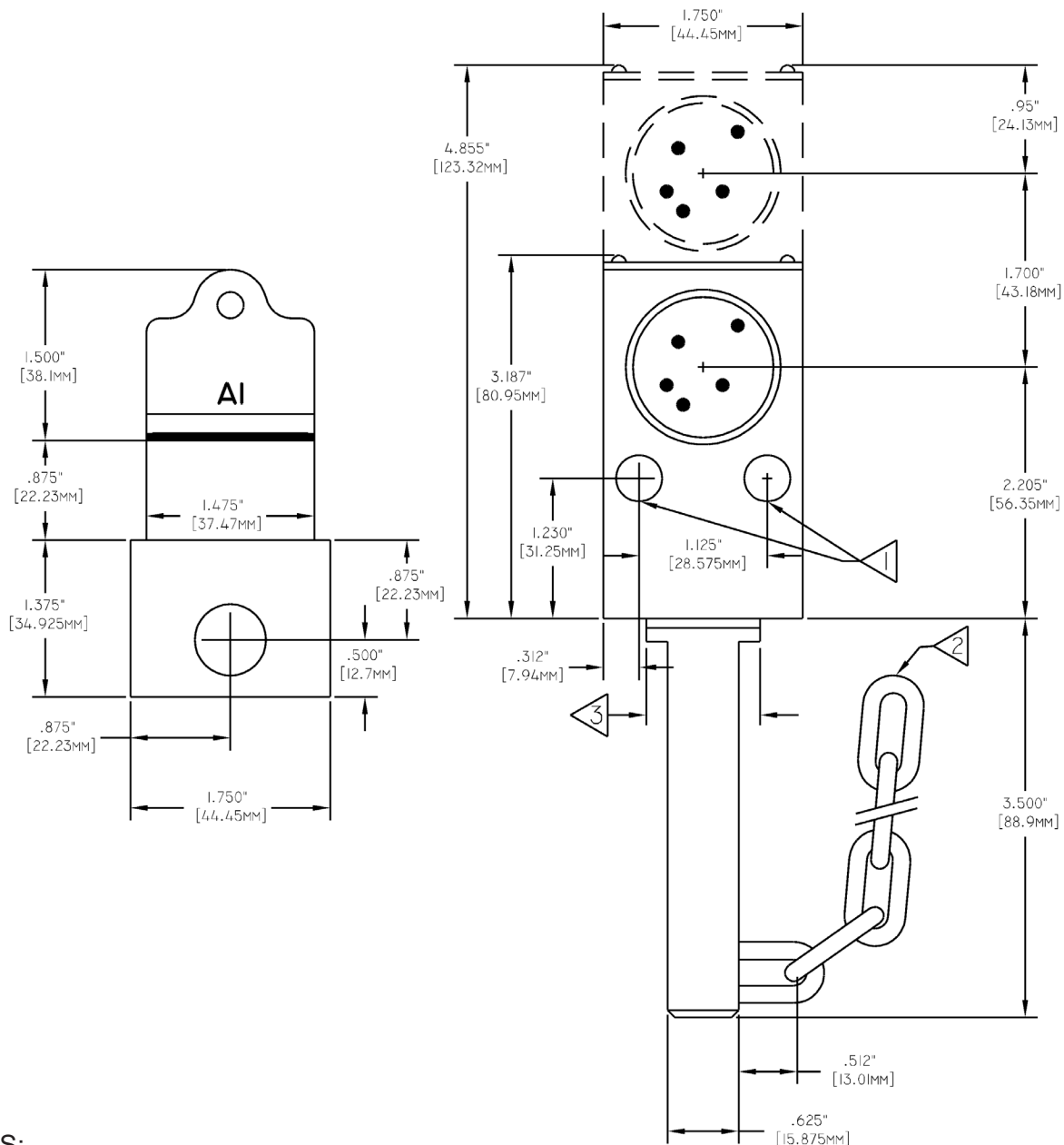
**DM2 and DM4 Adapter Plates** - see HD Series Data Sheet for Type DM- Mounting Options (1.5B) for details.

Caution: The Type DM interlock should not be used as the latching means for holding the door, hatch, or cover in the closed position.



3) 1" (25.4mm) diameter collar and gasket.

**Global Headquarters** | 9048 Meridian Circle NW | North Canton, OH 44720 | USA  
800.438.2442 | FAX 330.497.4400 | [sales@kirkkey.com](mailto:sales@kirkkey.com)



3) 1" (25.4mm) diameter collar and gasket.

**Global Headquarters** | 9048 Meridian Circle NW | North Canton, OH 44720 | USA  
800.438.2442 | FAX 330.497.4400 | [sales@kirkkey.com](mailto:sales@kirkkey.com)

# TYPE DM ORDERING GUIDE

	1	2	3	4	5	6	7	8	9	10	11	12	13	14	15
Part Number		D	M		-	-	-				-				

1	Series	K = SD Series   H = MD Series   S = HD Series													
4	Auxiliary Switch Refer to pages 25-27 for more information	0 = none   A = 2 N/C 1 N/O													
8,9	Cylinder(s) Type DM is available for up to 7 cylinders	SD Series							HD Series						
		1	0	= E 1 CYL	NOTE	Use numbering logic for up to 7 cylinders	1	0	= E 1 CYL	NOTE	Use numbering logic for up to 7 cylinders				
		1	1	= W 1 CYL			1	1	= W 1 CYL						
		2	0	= EE 2 CYL			2	0	= EE 2 CYL						
		2	1	= EW 2 CYL			2	1	= EW 2 CYL						
		3	0	= EEE 3 CYL			3	0	= EEE 3 CYL						
		3	1	= EEW 3 CYL			3	1	= EEW 3 CYL						
		3	2	= EWW 3 CYL			3	2	= EWW 3 CYL						
10	Stamp Key Interchange	- = No   S = Yes													
12	Protective Covers	- = No   C = Push On   F = Flip Open   (Push On cover only available for SD series)													
13	Mounting Bolts	- = No   M = Hex   T = Tamperproof													
14	Adapter Plate	- = No   P = DM2 Adapter Plate													
15	Reverse	R = Reverse switch housing relationship (Not available with Auxiliary Switch options A or B)													

The Type DM Interlock ships with a chain latch bolt unless the spring latch bolt is requested.