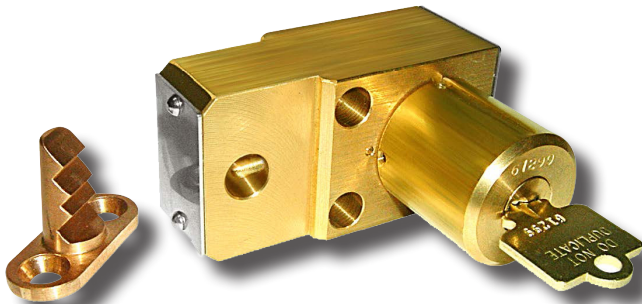




SPECIFICATION DATA SHEET

TYPE DC - PANEL DOOR INTERLOCK

WWW.KIRKKEY.COM



SD SERIES



HD SERIES

A Type DC interlock has two parts: a lock body and a catch. The catch is available in two styles, one suited to well aligned doors, the other suited to mis-aligned doors. The lock body is typically attached to a door or gate that swings open. The catch is typically attached to the door frame. When the key is turned and the door is opened, the lock body and catch are separated causing the key to become trapped in the lock. The key is held in the interlock as long as the door is open. When the door is properly closed, the catch seats fully into the lock body allowing the key to be turned and released, thereby locking the door closed. The standard Type DC interlock is designed to accept the catch from the rear (or back) of the lock body. All parts of the SD Series Type DC interlocks are made of brass. The HD Series Type DC is made from 316 stainless steel.

OPTIONS

Catch Entry - Rear Catch (standard) or Front Catch.

Catch Type - Optional spring mounted catch (Flex Catch) is available for badly mis-aligned doors.

Stamp Key Interchange - specify an alphanumeric code to be stamped on the cylinder face and the key (e.g. A1, A2, B1, etc. - up to 5 characters). See Data Sheet Keys (3.4) and Terminology (4.1) for details.

Protective Covers - see Data Sheet Protective Covers (3.1) for details.

Mounting Bolts - see Data Sheet Mounting Bolts (3.2) for details.

Opposite Hand - see Data Sheet Terminology (4.1) for details.

Caution: The Type DC interlock should not be used to align the door, or to be the only latching means for holding the door in the closed position.

SD Series
Standard Catch



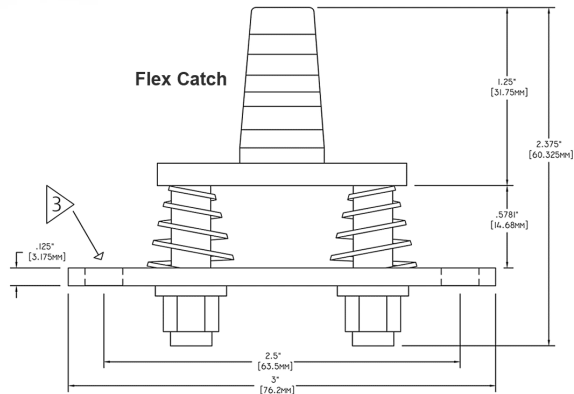
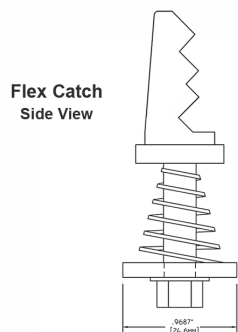
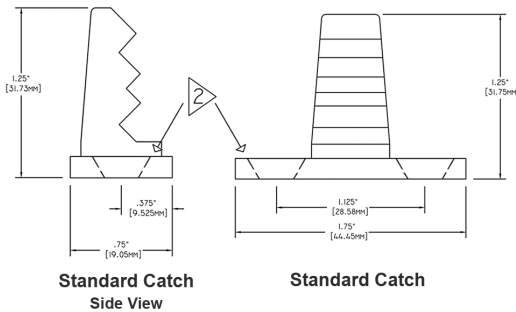
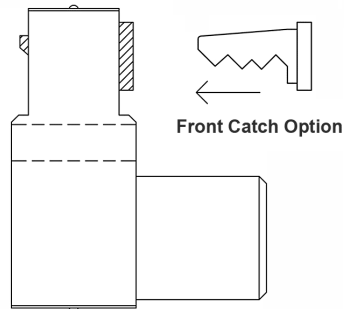
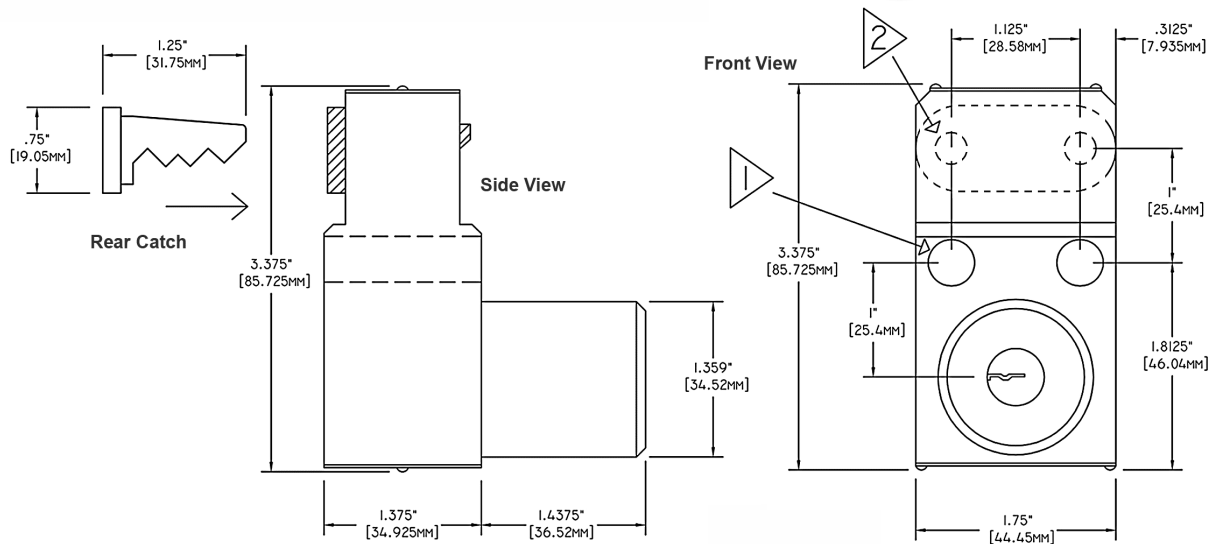
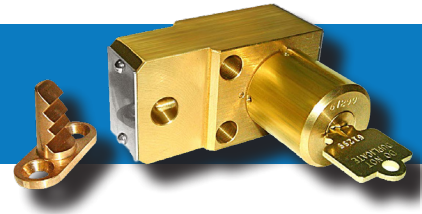
SD Series
Flex Catch

HD Series
Standard Catch



HD Series
Flex Catch

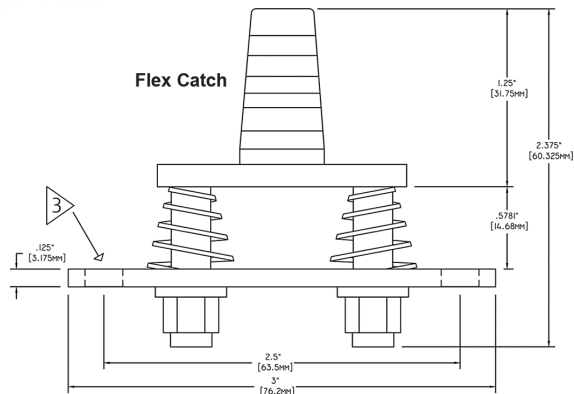
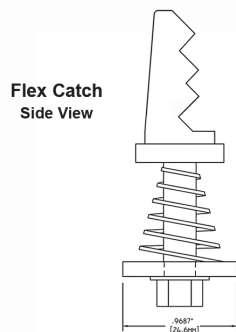
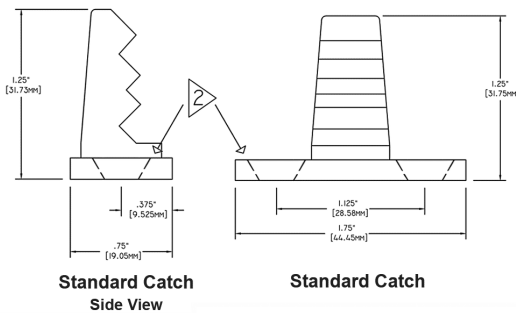
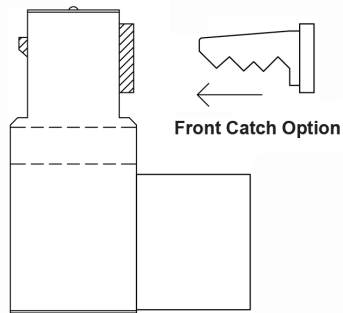
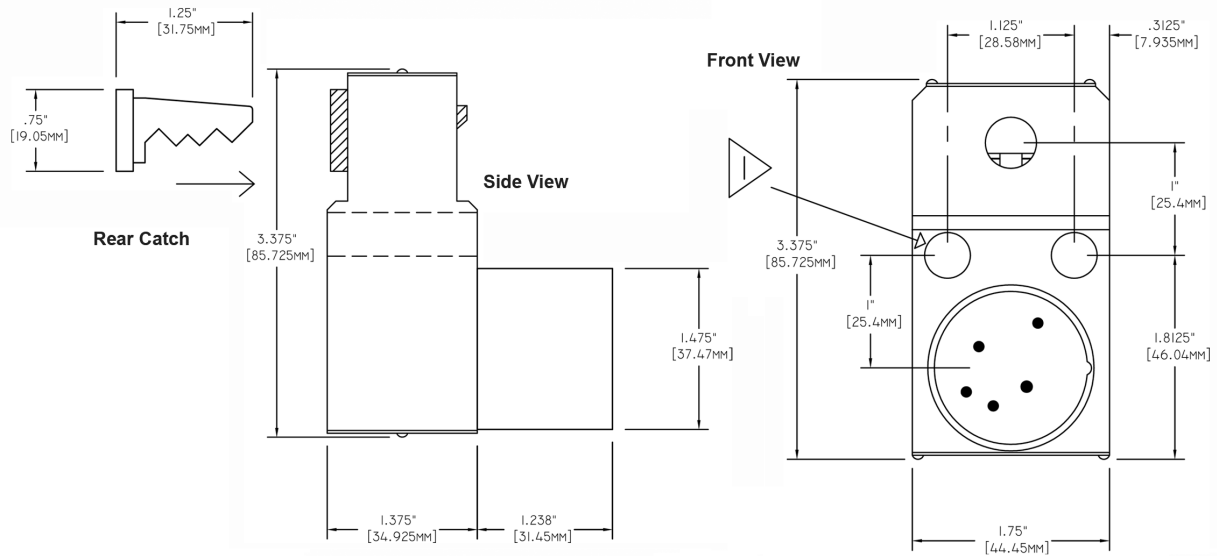
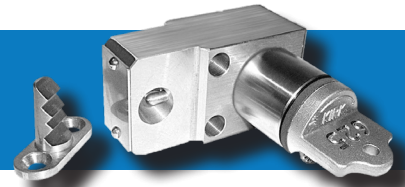
SD SERIES TYPE DC DRAWING



NOTES:

- 1) 0.4062" (10.32mm) Holes for Mounting Bolts (2 Holes)
- 2) 0.277" (7mm) Countersunk Holes (2 Holes) in Standard Catch
- 3) 0.277" (7mm) Holes for Mounting Bolts (2 Holes) in Flex Catch

HD SERIES TYPE DC DRAWING



NOTES:

- 1) 0.4062" (10.32mm) Holes for Mounting Bolts (2 Holes)
- 2) 0.277" (7mm) Countersunk Holes (2 Holes) in Standard Catch
- 3) 0.277" (7mm) Holes for Mounting Bolts (2 Holes) in Flex Catch

TYPE DC ORDERING GUIDE

Part Number

1	2	3	4	5	6	7	8	9
	D	C						

1	Series	K = SD Series S = HD Series
4	Catch Entry	R = Rear Catch (Normal) F = Front Catch
5	Catch Type	1 = Standard 2 = Flex
6	Stamp Key Interchange	- = No S = Yes
7	Protective Cover	- = No C = Push On F = Flip Open (Push On cover only available for SD series)
8	Mounting Bolts	- = No M = Hex T = Tamperproof
9	Opposite Hand	- = No H = Yes (Only available in SD Series)