



SPECIFICATION DATA SHEET

PROTECTIVE COVERS

WWW.KIRKKEY.COM



SD SERIES
PUSH ON



SD SERIES
FLIP OPEN



HD SERIES (LOTO)
FLIP OPEN

Protective covers shield the lock cylinder and key from adverse environmental conditions such as moisture, dirt, and sleet. The protective covers also protect the key from accidental damage. We highly recommend protective covers for outdoor installations.

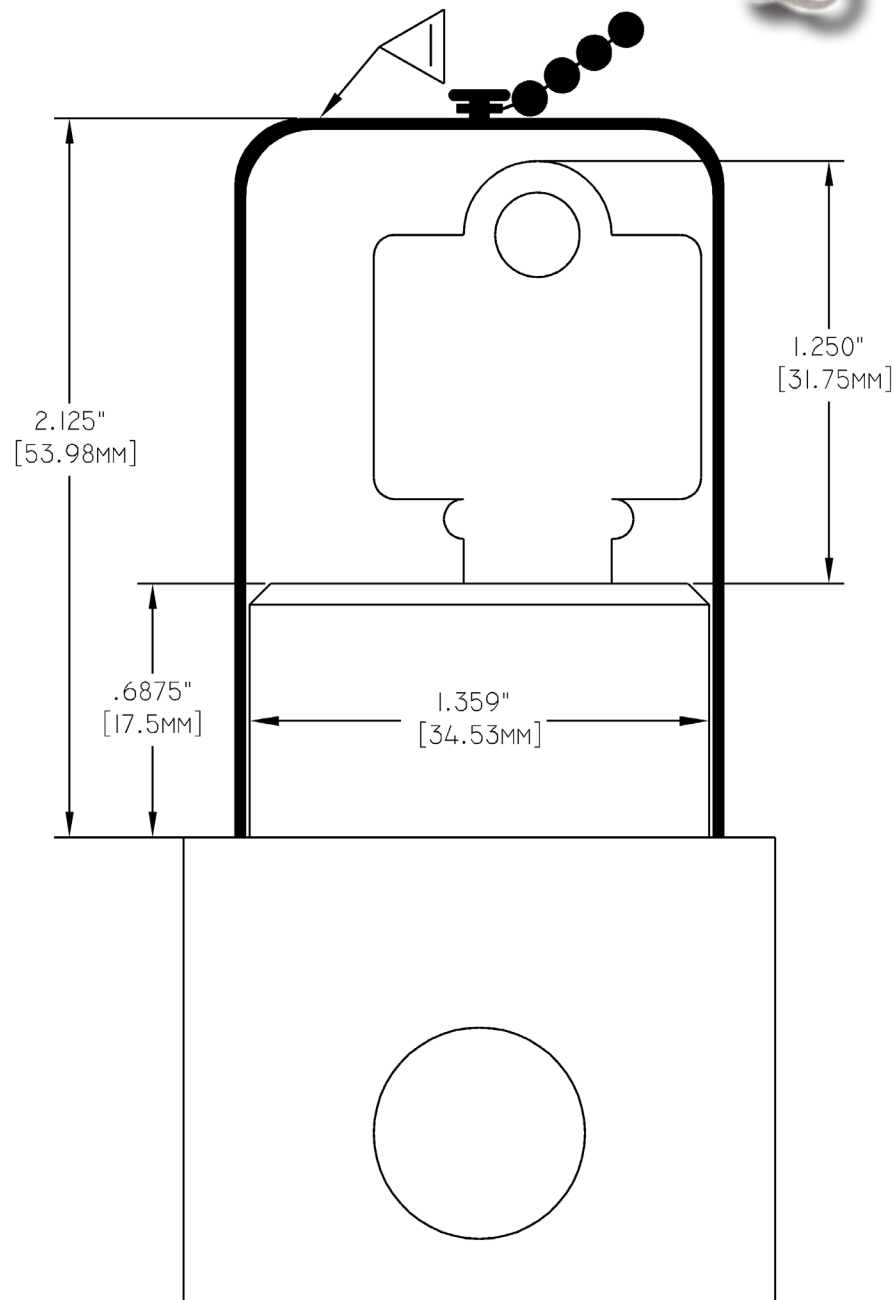
SD Series Push On: The push on protective cover can be placed over the lock cylinder when the key is in the held position or removed. One end of the protective cover chain is attached to the top of the protective cover and serves to retain the cover when removed. The other end has a mounting ring, which is secured under a mounting bolt head. The flip open protective cover is made from stainless steel.

On a multi-cylinder interlock, all of the push on protective covers are tethered together and secured with a single mounting ring for your convenience.

SD Series Flip Open: The flip open protective cover is hinged and is held closed with spring tension. It is designed to protect the lock cylinder and key regardless of the position of the key. The flip open protective cover is attached to the lock cylinder with a stainless steel set screw. The flip open protective cover is made from stainless steel.

HD Series (LOTO) Flip Open: The HD LOTO protective cover is hinged and held closed with spring tension. It is designed to protect the lock cylinder when the key is removed. The flip open protective cover is attached to the lock cylinder with a stainless steel set screw. The flip open protective cover is made from 316 stainless steel.

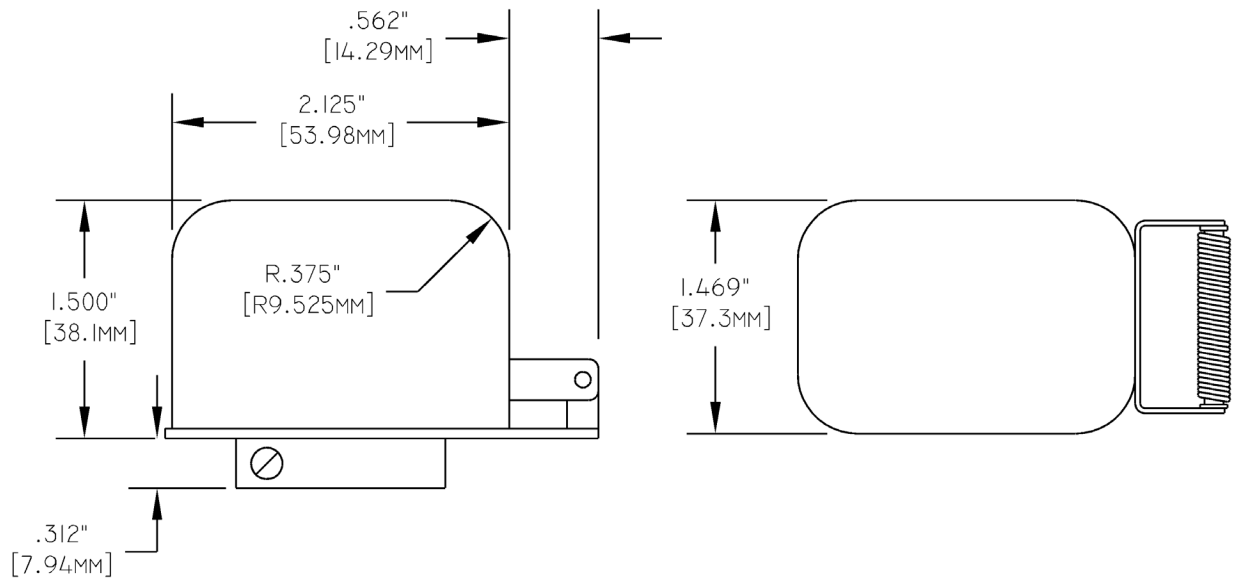
SD SERIES PUSH ON DRAWING



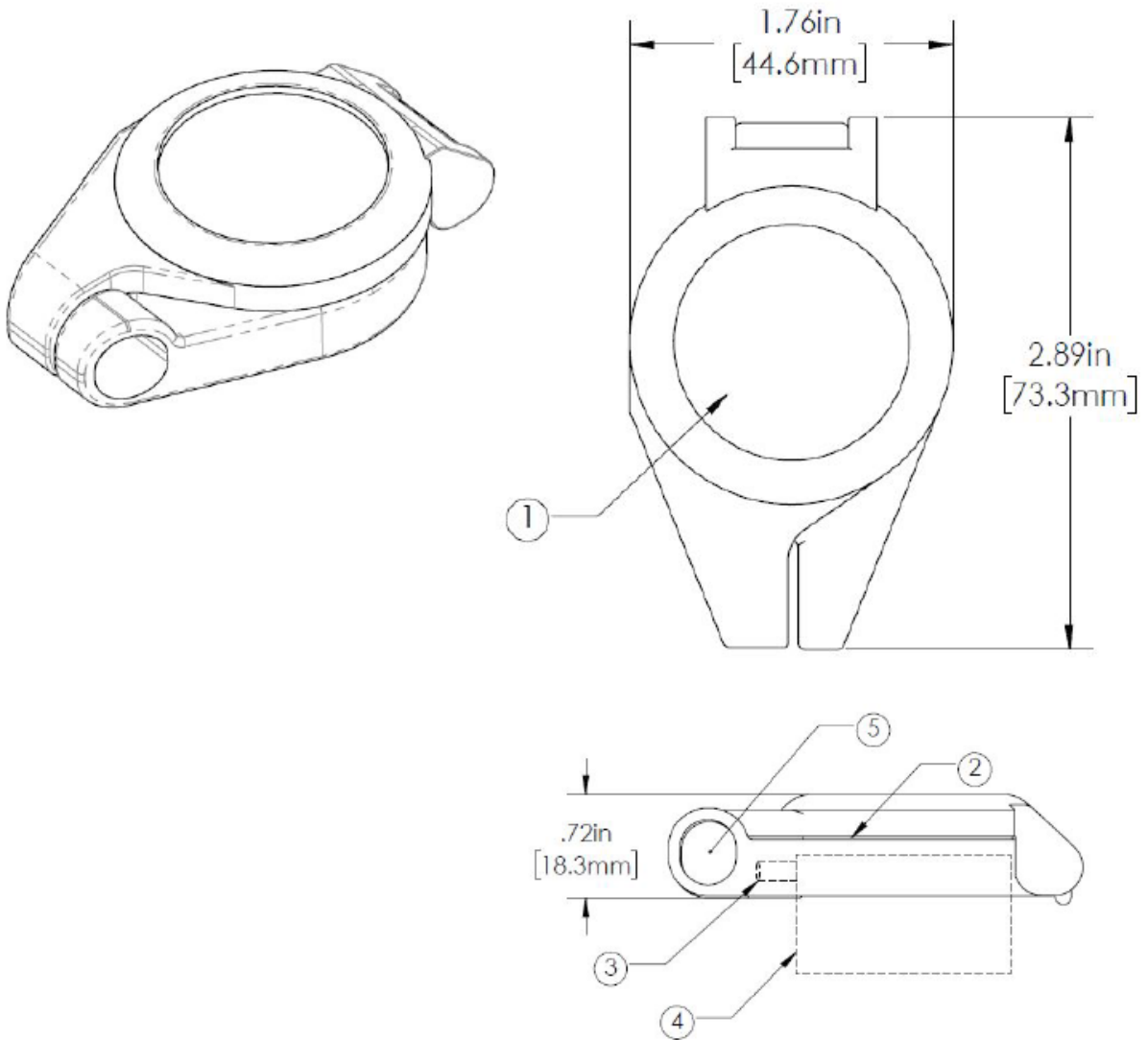
NOTES:

- 1) Outline of push on protective cover.

SD FLIP OPEN COVER DRAWING



HD LOTO PUSH ON DRAWING



Notes:

- 1) Optional key interchange marking.
- 2) Gasket.
- 3) Mounting set screw.
- 4) Lock cylinder.
- 5) Locking Point.

PROTECTIVE COVERS ORDERING GUIDE



SD SERIES
PUSH ON

To order the push on protective cover put the letter “C” in the appropriate column of the interlock part number. Reference part number when ordering separately.

Part Number

1	2	3	4	5	6	7	8	9
2	3	4	7	2	9	5	0	1



SD SERIES
FLIP OPEN

To order the flip open protective cover put the letter “F” in the appropriate column of the interlock part number. Reference part number when ordering separately.

Part Number - SD Series

1	2	3	4	5
F	C	5	0	1



HD SERIES (LOTO)
FLIP OPEN

To order the flip open protective cover put the letter “F” in the appropriate column of the interlock part number. Reference part number when ordering separately.

Part Number

1	2	3	4	5	6	7	8	9
5	0	3	0	6	6	0	0	1