



SPECIFICATION DATA SHEET

TYPE SA1/SA2/SA3 - SWITCHGEAR ADAPTER INTERLOCK

WWW.KIRKKEY.COM



HD SERIES
TYPE SA1/SA2



HD SERIES
TYPE SA3

The Type SA1, SA2, and SA3 switchgear adapter interlocks have a 3/8" (9.5mm) square, 7/8" (22mm) long shaft that is controlled by the robust HD Series key. The SA1/SA2 interlocks have a mounting flange that will accept two 1/4" (7mm) mounting bolts. The SA3 is attached to the interlock provisions by (4) 10-32 tapped holes in the bottom of the lock cylinder. Type SA1, SA2, and SA3 interlocks can be ordered with the shaft rotating clockwise or counterclockwise. Multiple degrees of rotation are available also. The Type SA1, SA2, and SA3 are available in HD series only and are comprised of 316 stainless steel.

OPTIONS

Style – SA1, SA2, or SA3 mounting. See drawing on page 2 and the Switchgear Adapter Interlock Ordering Guide on page 3.

Rotation to Trap Key – clockwise or counterclockwise.

Degree of Rotation – 45, 65, 90 or 120 degrees are possible.

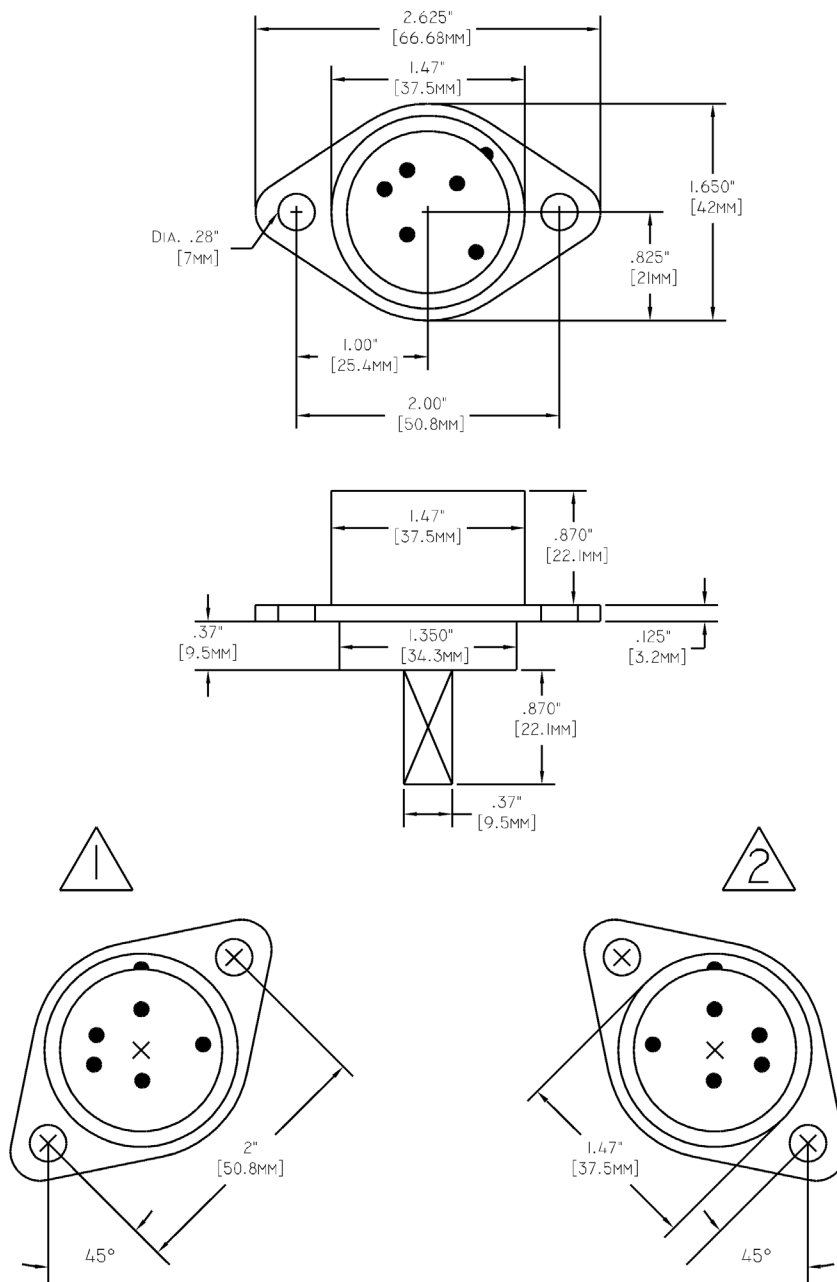
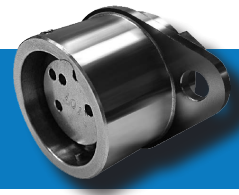
Shaft Size - 3/8" (9.5mm) square is standard. Other sizes are available – please specify.

Shaft Length - 7/8" (22mm) is standard. Other lengths are available – please specify.

Stamp Key Interchange - specify an alphanumeric code to be stamped on the key (e.g. A1, A2, B1, etc. - up to 5 characters). See Keys (3.4) and Terminology (4.1) Data Sheets for details.

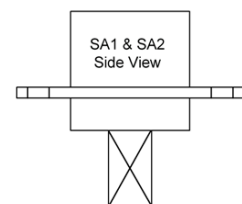
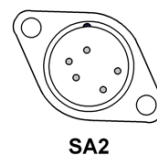
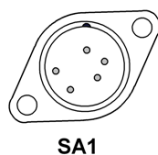
Protective Covers - see Protective Covers Data Sheet (3.1) for details.

HD SERIES TYPE SA1/SA2 DRAWING

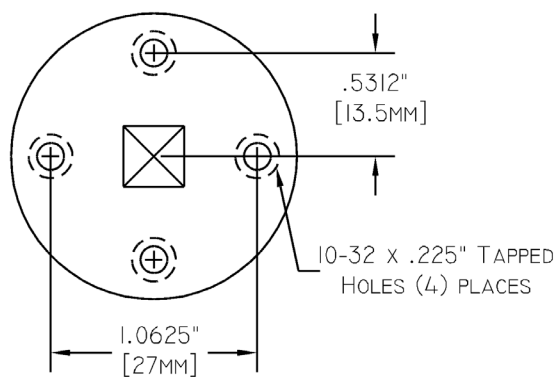
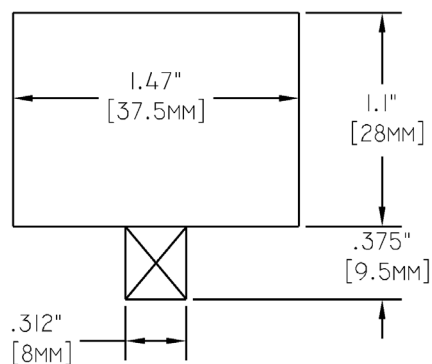
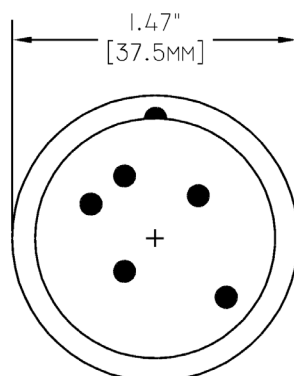
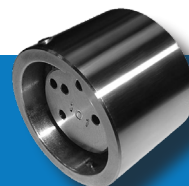


NOTES:

- 1) Type SA1 mounting.
- 2) Type SA2 mounting.



HD SERIES TYPE SA3 DRAWING



TYPE SA1 / SA2 / SA3 ORDERING GUIDE

Part Number

1	2	3	4	5	6	7	8	9	10
S	S	A							

4	Style	1 = SA1 2 = SA2 3 = SA3
5	Rotation to Trap Key	1 = Clockwise 2 = Counterclockwise
6	Degrees of Rotation	4 = 45 Degrees 6 = 65 Degrees 9 = 90 Degrees 1 = 120 Degrees
7	Shaft Section	1 = 9.5 mm Square X = Specify
8	Shaft Length	S = 22 mm (3/8") X = Specify
9	Protective Cover	- = No F = Protective Cover
10	Stamp Key Interchange	- = No S = Yes (Only available with flip cover)