



WWW.KIRKKEY.COM

SPECIFICATION DATA SHEET

TYPE VL - VALVE LOCK



The Type VL, Valve Lock, is supplied with a stainless steel 1/4-turn ball valve. Sizes of valve range from 1/4" up to 4". The Type VL is sold completely assembled with the valve and interlock ready for on site installation. The Type VL interlock components are manufactured entirely from 316 stainless steel, making it ideal for use in wash down, harsh industrial or coastal environments. The Type VL utilizes the heavy duty key design and cylinder mechanism, designed to resist dirt and debris from impeding normal interlock operation. The unique oversized key is robust and cannot be duplicated. The Type VL, combined with other KIRK HD Series interlocks, will create a comprehensive trapped key interlock system for your instrumentation and control processes. The Type VL is assembled with a stainless steel valve with NPT threaded connections. The valve is operated through the use of the stainless steel lever, not the key, minimizing failure.

The ratings of the valve are as follows:

* Stainless Steel: up to 1000 CWP (psig)

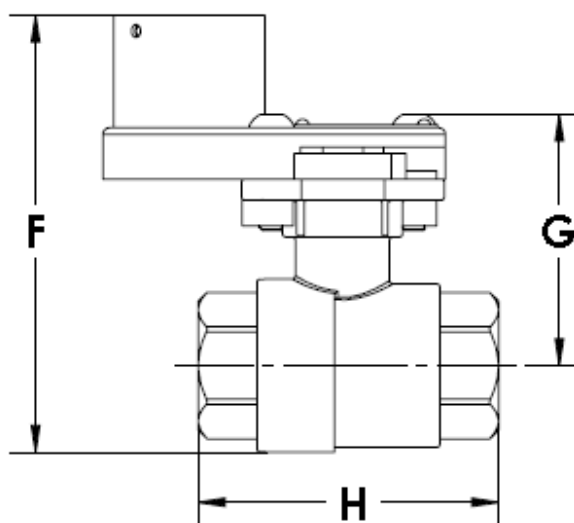
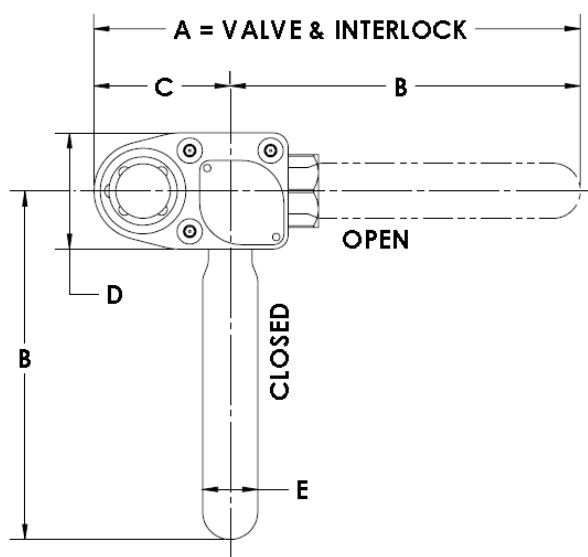
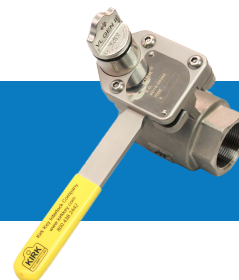
OPTIONS

Key Removable - Single key, or cylinder 1 on the dual cylinder, the key is removable in either the open or closed position. Standard application for single key is key removable valve closed. Specify key removable position during ordering.

Key Interchange - Specify an alphanumeric code to be stamped on the cylinder(s) face and laser marked on the key (e.g. A1, A2, B1, etc. - up to 5 characters). For dual cylinder, must indicate which cylinder ('C' or 'O') and key is to have which interchange as specified. See Data Sheet Keys (3.4) and Terminology (4.1) for details.

Protective Covers - see Data Sheet Protective Covers (3.1) for details.

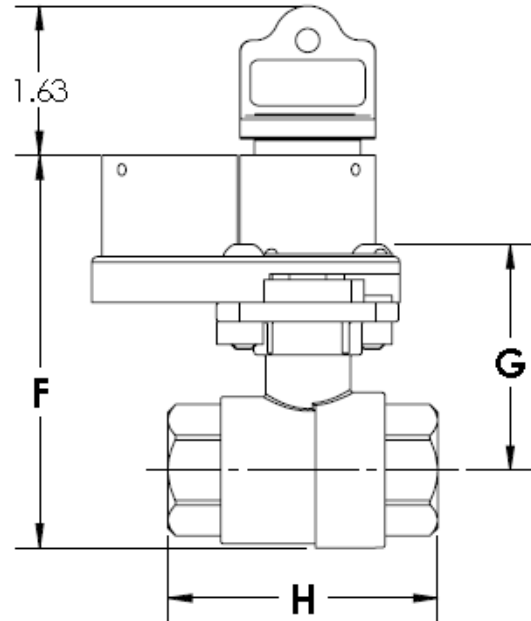
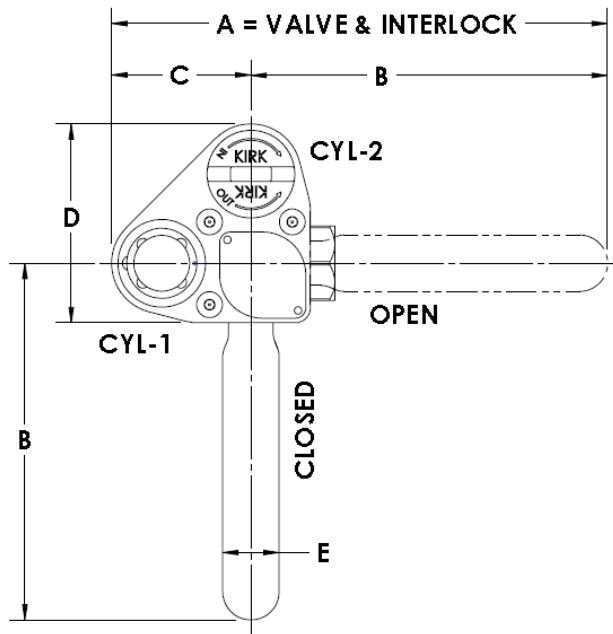
HD SERIES TYPE VL 1-CYLINDER



SINGLE CYLINDER VL INTERLOCKS

| SIZE | A | B | C | D | E | F | G | H |
|-------|-------|-------|------|------|------|-------|------|------|
| 0.250 | 8.35 | 6.00 | 2.35 | 2.00 | 0.95 | 3.86 | 2.16 | 2.56 |
| 0.375 | 8.35 | 6.00 | 2.35 | 2.00 | 0.95 | 3.86 | 2.16 | 2.56 |
| 0.500 | 8.35 | 6.00 | 2.35 | 2.00 | 0.95 | 3.86 | 2.16 | 2.56 |
| 0.750 | 8.35 | 6.00 | 2.35 | 2.00 | 0.95 | 4.27 | 2.45 | 2.94 |
| 1.000 | 10.35 | 8.00 | 2.35 | 2.00 | 0.95 | 4.87 | 2.87 | 3.46 |
| 1.250 | 10.35 | 8.00 | 2.35 | 2.00 | 0.95 | 5.24 | 3.03 | 4.02 |
| 1.500 | 12.44 | 10.00 | 2.44 | 2.76 | 0.95 | 6.10 | 3.85 | 4.33 |
| 2.000 | 12.44 | 10.00 | 2.44 | 2.76 | 0.95 | 6.72 | 4.14 | 4.92 |
| 2.500 | 15.16 | 12.00 | 2.77 | 3.65 | 0.95 | 8.28 | 5.38 | 6.32 |
| 3.000 | 15.51 | 12.00 | 2.77 | 3.65 | 0.95 | 8.97 | 5.70 | 7.01 |
| 4.000 | 16.73 | 12.00 | 2.77 | 3.65 | 0.95 | 10.82 | 6.33 | 9.45 |

HD SERIES TYPE VL 2-CYLINDER



| DUAL CYLINDER VL INTERLOCKS | | | | | | | | |
|-----------------------------|-------|-------|------|------|------|-------|------|------|
| SIZE | A | B | C | D | E | F | G | H |
| 0.250 | 8.35 | 6.00 | 2.35 | 3.35 | 0.95 | 3.86 | 2.16 | 2.56 |
| 0.375 | 8.35 | 6.00 | 2.35 | 3.35 | 0.95 | 3.86 | 2.16 | 2.56 |
| 0.500 | 8.35 | 6.00 | 2.35 | 3.35 | 0.95 | 3.86 | 2.16 | 2.56 |
| 0.750 | 8.35 | 6.00 | 2.35 | 3.35 | 0.95 | 4.27 | 2.45 | 2.94 |
| 1.000 | 10.35 | 8.00 | 2.35 | 3.35 | 0.95 | 4.87 | 2.87 | 3.46 |
| 1.250 | 10.35 | 8.00 | 2.35 | 3.35 | 0.95 | 5.24 | 3.03 | 4.02 |
| 1.500 | 12.44 | 10.00 | 2.44 | 3.82 | 0.95 | 6.10 | 3.85 | 4.33 |
| 2.000 | 12.46 | 10.00 | 2.44 | 3.82 | 0.95 | 6.72 | 4.14 | 4.92 |
| 2.500 | 15.16 | 12.00 | 2.77 | 4.59 | 0.95 | 8.28 | 5.38 | 6.32 |
| 3.000 | 15.51 | 12.00 | 2.77 | 4.59 | 0.95 | 8.97 | 5.70 | 7.01 |
| 4.000 | 16.73 | 12.00 | 2.77 | 4.59 | 0.95 | 10.82 | 6.33 | 9.45 |

TYPE VL ORDERING GUIDE

Contact a KIRK insides sales team member at sales@kirkkey.com to discuss your specific application needs. Provide the KIRK team with a detailed schematic of your application to ensure the valve interlock(s) is/are designed to your unique safety processes.

| | | | | | | | | | | |
|--------------------|----------|----------|----------|----------|---|---|----------|---|---|----|
| | 1 | 2 | 3 | 4 | 5 | 6 | 7 | 8 | 9 | 10 |
| Part Number | V | L | S | - | | | - | | | |

| | | | | | |
|--------|---------------------------------------------------------------------------------------|----------------------------------------------------------------------------------------|-----|-----|-----|
| 1,2 | Type of Lock = VL | | | | |
| 3 | Stainless = S | | | | |
| 5 | Cylinders | 1 = 1 cyl 2 = 2 cyl | | | |
| 6 | Key Removable Position | C = Closed O = Open | | | |
| | Standard operation is key removable lock closed | C' or 'O' designation applies to cylinder 1 on dual cylinder. See diagram for details. | | | |
| 8,9,10 | Valve Sizes Available | 025 | 037 | 050 | 075 |
| | 0.25", 0.375", 0.50", 0.75", 1.00", 1.25", 1.50", 2.00", 2.50", 3.00", 4.00" | 100 | 125 | 150 | |
| | | 200 | 250 | | |
| | | 300 | 400 | | |